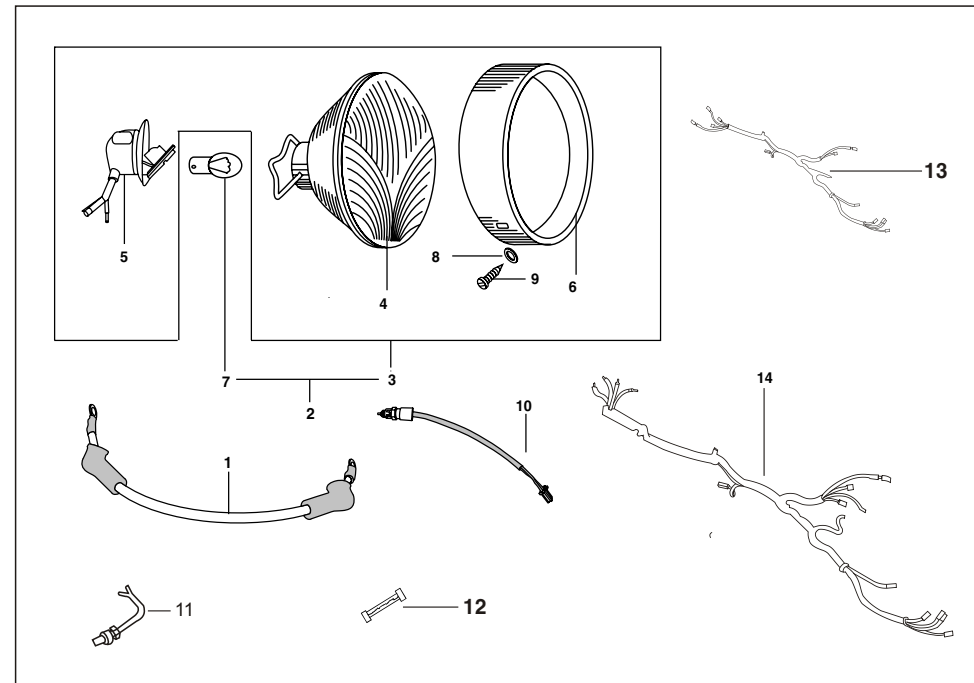
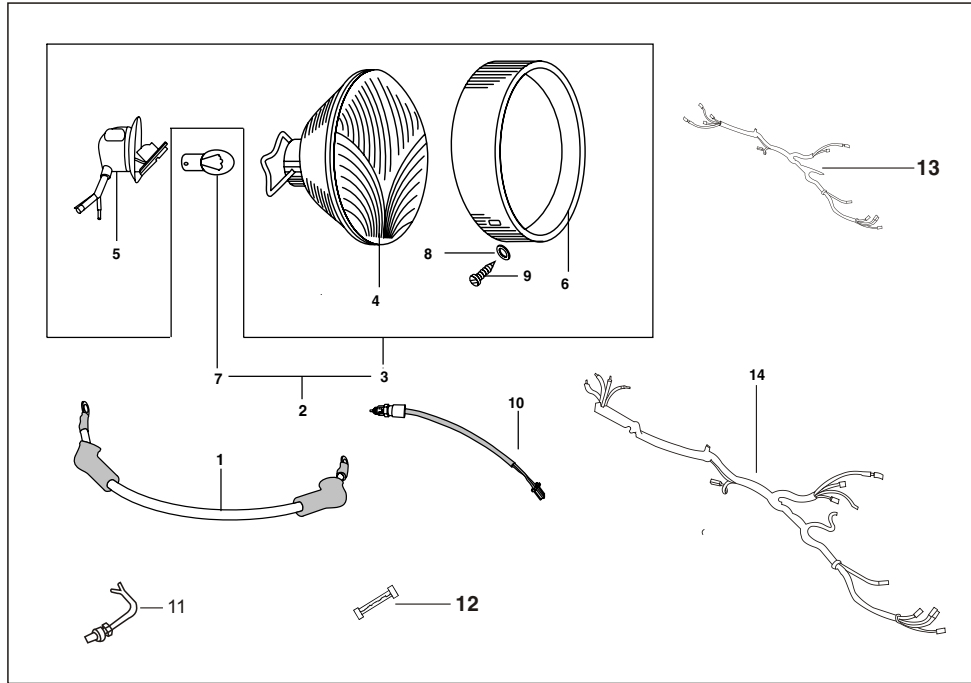


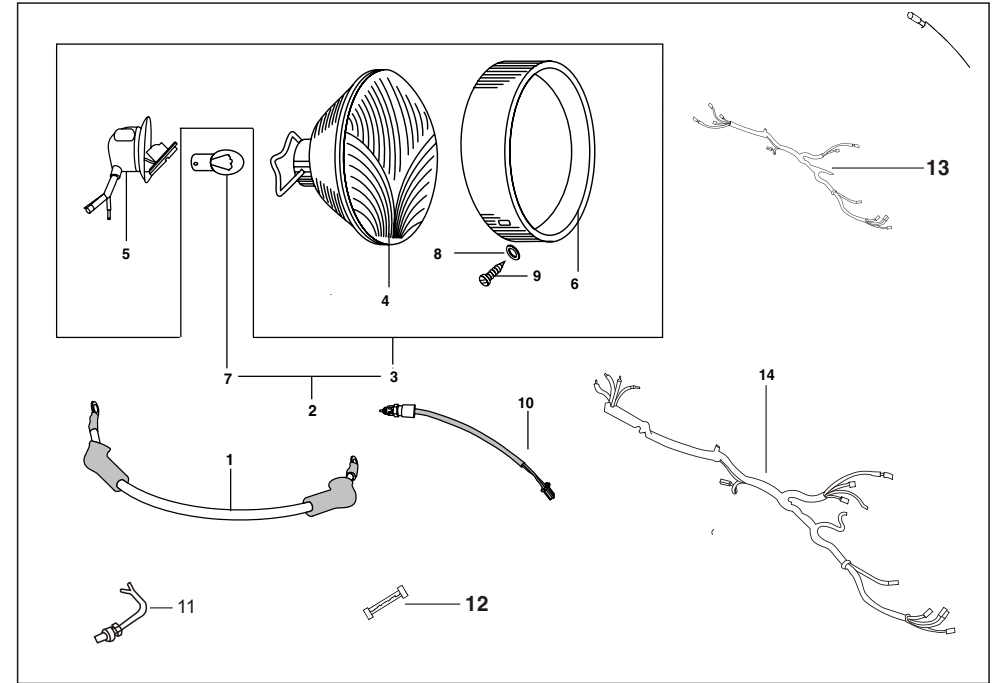
No.	Part No.	Description	Qty/Veh.			Remarks
			24	AG	AS	
1	24 2012 79	Cable assly red	1	--	--	
2	AB 2010 72	Head lamp assly comp.	1	1	1	From Dec. 01 (antidive suspension)
3	06 2013 34	Head lamp assly comp.	1	1	1	Up to Nov. 01
4	AB 2010 73	Head light assly	1	1	1	W/o Lamp
5	06 2012 04	Reflector assly	1	1	1	
6	06 2013 96	Lamp holder assly	1	1	1	
7	AB 2010 68	Head lamp rim	1	1	1	From Dec. 01 (antidive suspension)
8	20 2010 02	Head lamp rim	1	1	1	Up to Nov. 01
9	25 2010 09	Lamp 12V 35/35W	1	1	1	
10	01 2002 13	Cup Washer	2	2	2	
11	39 0006 01	Csk/ round head screw-M4	2	2	2	
12	AF 2010 94	Rear brake switch	1	1	1	
13	BA 2010 33	Switch reverse light	1	1	1	
14	06 2012 64	Fuse 5 Amp.	1	1	1	



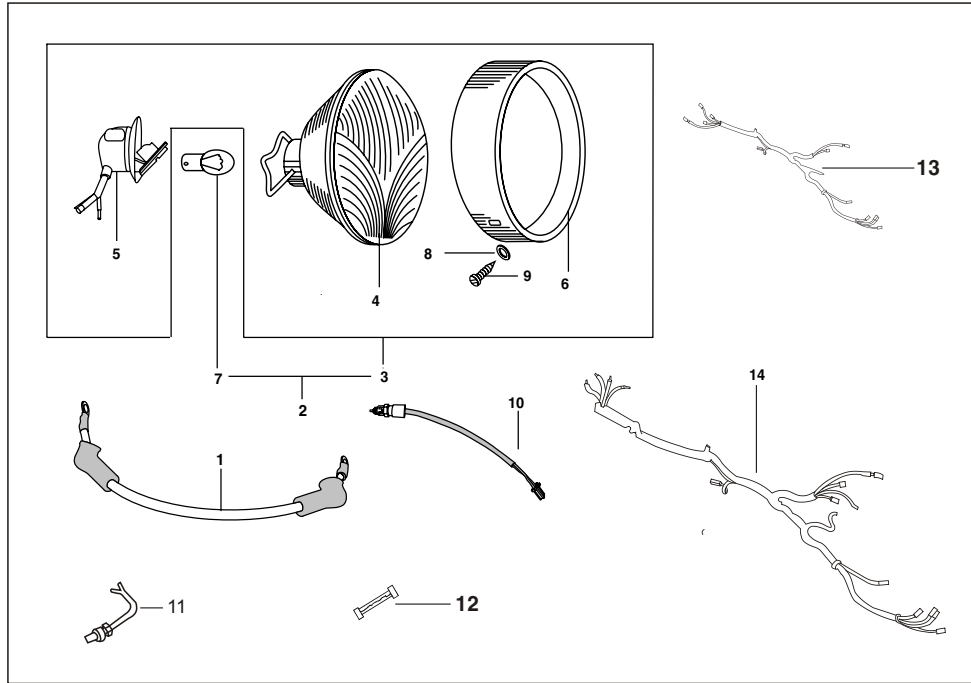
No.	Part No.	Description	Qty/Veh.			Remarks
			24	AG	AS	
13	24 2013 55	Wiring Harness Front	1	--	--	From 10.03.08 (Mod. tool box)
	24 2013 48	Wiring Harness Front	1	--	--	From 14.02.07 to 09.03.08 One piece handle bar
	24 2013 30	Wiring Harness Front	1	--	--	From Nov. 06 to 13.02.07 6 pole coupler On Off S/W
	24 2013 26	Wiring Harness Front	1	--	--	From May 06 to Oct. 06 On off Parking switch
	24 2012 78	Wiring Harness Front	1	--	--	From Feb. 05 to Apr. 06 Battery in engine room
	24 2012 72	Wiring Harness Front	1	--	--	From Oct. 04 to Jan. 05 High power magneto
	24 2012 60	Wiring Harness Front	1	--	--	From Dec. 01 to Sept. 04 Flasher, relay, fuse box inside tool box
	24 2012 55	Wiring Harness Front	1	--	--	Upto Nov. 01



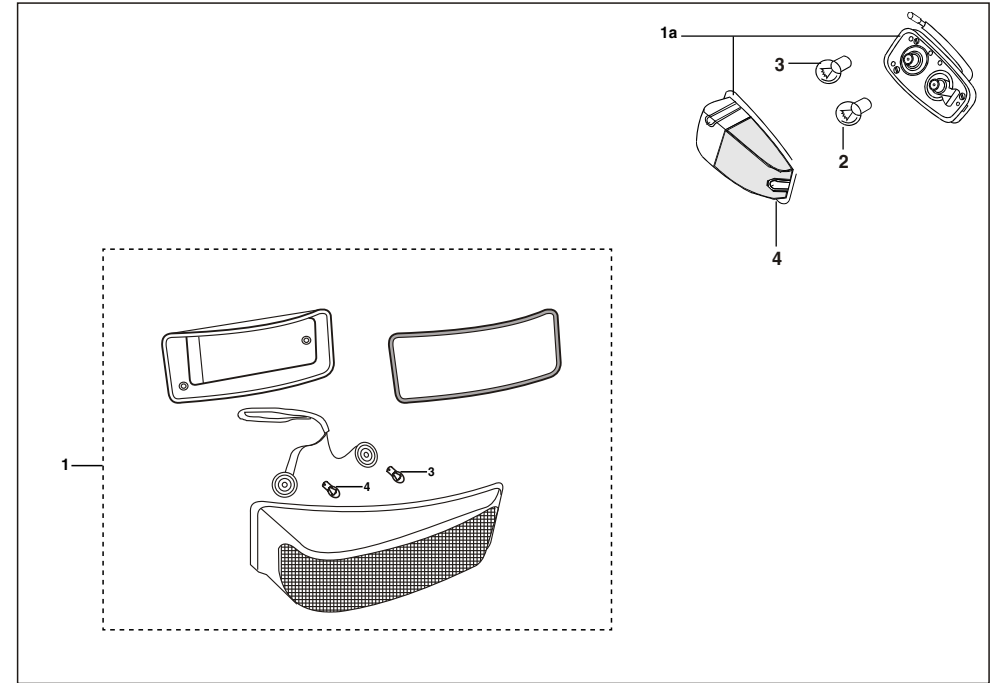
No.	Part No.	Description	Qty/Veh.			Remarks
			24	AG	AS	
	24 2013 59	Wiring Harness Front	--	1	--	From 11.04.08 (Mod. tool box)
	24 2013 40	Wiring harness front	--	1	--	From June 07 to 10.04.08 Vanaz kit
	24 2013 32	Wiring Harness Front	--	1	--	From Nov. 06 to May 07 6 pole coupler On Off S/W
	24 2013 23	Wiring Harness Front	--	1	--	From May 06 to Oct. 06 On off Parking switch
	24 2012 89	Wiring Harness Front	--	1	--	Upto Apr. 06
	24 2014 01	Wiring Harness Front	--	--	1	From 09.01.2010 Mod. solenoid
	24 2013 57	Wiring Harness Front	--	--	1	From 31.07.08 to 08.01.10 (Mod. tool box)
	24 2013 31	Wiring Harness Front	--	--	1	From Nov. 06 to 30.07.08 6 pole coupler On Off S/W
	24 2013 22	Wiring Harness Front	--	--	1	From May 06 to Oct. 06 On off Parking switch
	24 2012 81	Wiring Harness Front	--	--	1	Upto Apr. 06



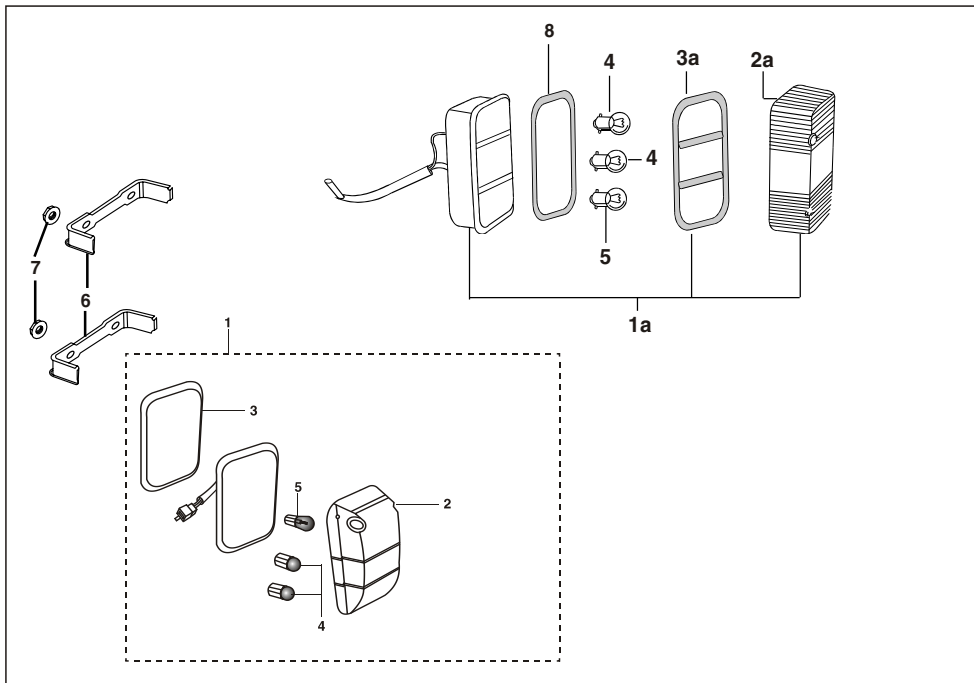
No.	Part No.	Description	Qty/Veh.			Remarks
			24	AG	AS	
14	24 2013 47	Wiring harness - chassis	1	--	--	From 19.05.2008 H T coil mtg on C'case
	24 2013 27	Wiring harness - chassis	1	--	--	From Nov. 06 to 18.05.2008 Integral fuse box
	24 2012 79	Wiring harness - chassis	1	--	--	From Feb. 05 to Oct. 06 Battery shifted in engine room
	24 2012 73	Wiring harness - chassis	1	--	--	From Oct.04 to Jan. 05 High power magneto
	24 2012 71	Wiring harness - chassis	1	--	--	From May 02 to Sept. 04
	24 2012 61	Wiring harness -Body	1	--	--	From Dec. 02 to April 02
	24 2012 37	Wiring harness -Body	1	--	--	Upto Nov. 02
	24 2014 02	Wiring harness - chassis	--	--	1	For vanaz kit from 09.01.10
	24 2013 45	Wiring harness - chassis	--	--	1	For vanaz kit
	24 2012 82	Wiring harness - chassis	--	--	1	For Minda kit
	24 2013 41	Wiring harness - chassis	--	1	--	For Vanaz kit
	24 2012 90	Wiring harness - chassis	--	1	--	For Minda kit



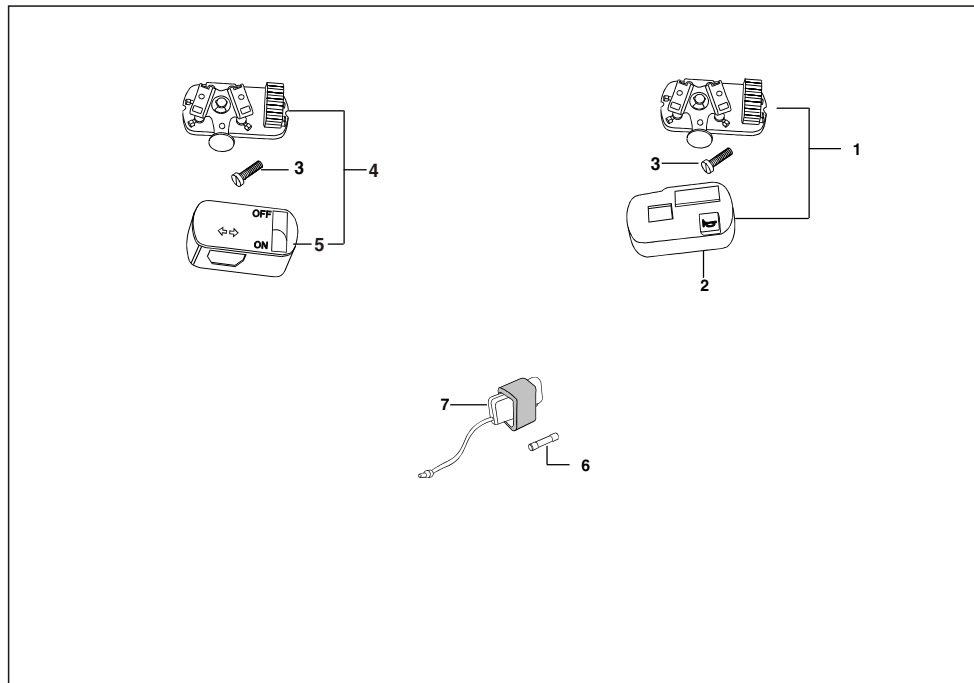
No.	Part No.	Description	Qty/Veh.			Remarks
			24	AG	AS	
15	24 2013 63	Cable assly flasher Hazard	1	--	--	From 10.03.2008
	24 2013 60	Cable assly relay	--	--	1	From 11.04.08
	24 2013 61	Cable assly relay	--	1	--	From 31.07.08
16	24 2013 64	Combined wiring harness	1	--	--	From Aug. 08
	24 2013 65	Fuse box	1	--	--	From Aug. 08



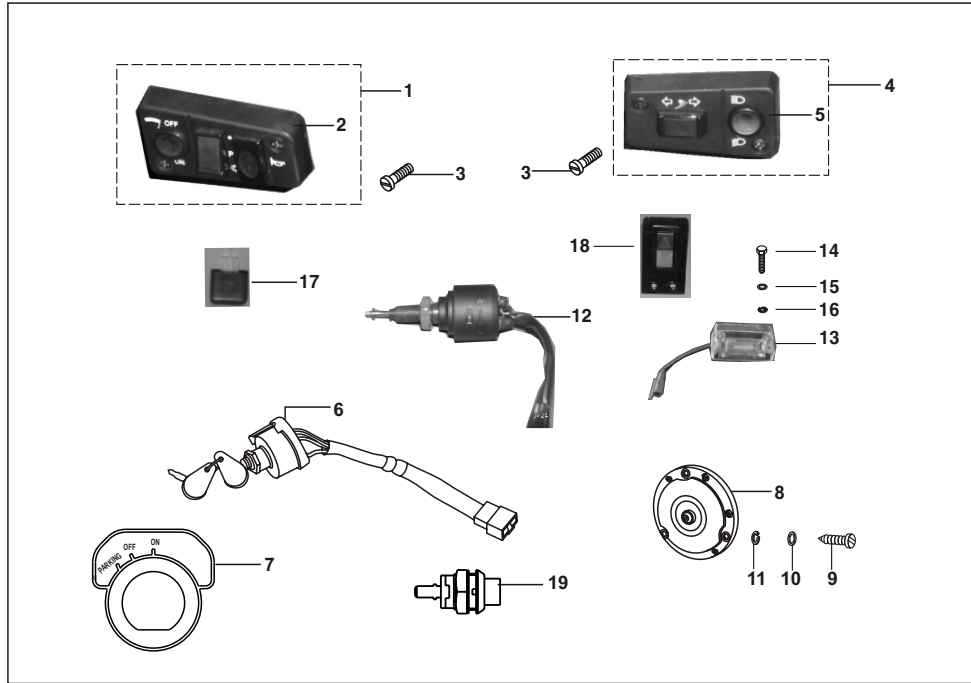
No.	Part No.	Description	Qty/Veh.			Remarks
			24	AG	AS	
1	AA 2010 91	Front light assly. LH	1	1	1	From Jan.03
	AA 2010 93	Front light assly. RH	1	1	1	From Jan.03
1A	BA 2010 47	Front light comp.	2	2	1	Upto Dec.02
2	06 2010 83	Lamp 12v 10w	2	2	2	For side indicator
3	06 2010 82	Lamp 12v 5w	2	2	2	
4	22 2005 21	Glass	2	2	2	For BA201047



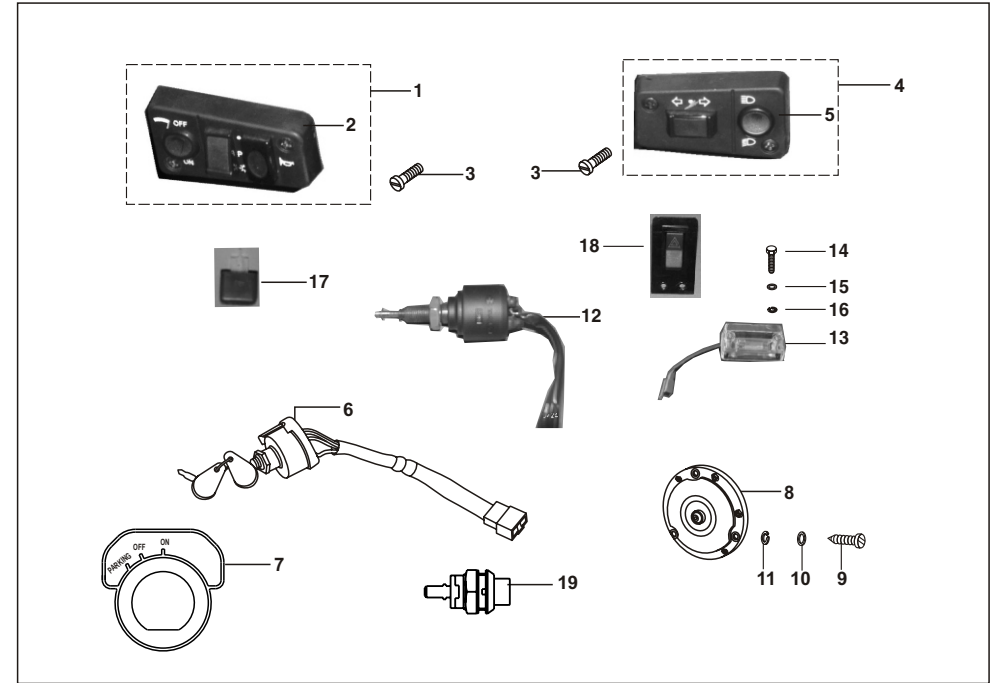
No.	Part No.	Description	Qty/Veh.			Remarks
			24	AG	AS	
1	AA 2011 57	Tail light LH with lamp	1	1	1	From Feb.05
	AA 2010 99	Tail light LH with lamp	1	1	1	From Jan 03 to Jan.05
	AA 2011 60	Tail light RH with lamp	1	1	1	From Feb.05
	AA 2011 00	Tail light RH with lamp	1	1	1	From Jan 03 to Jan.05
1A	BA 2010 48	Tail light comp.	2	2	2	Upto Dec.02
2	AA 2011 61	Lens tail lamp LH	1	1	1	From Jan. 03
	AA 2010 70	Lens tail light RH	1	1	1	From Jan. 03
2A	BA 2010 29	Lens	2	2	2	Upto Dec. 02
3	AC 2010 21	Packing for tail light LH & RH	2	2	2	From Jan 03
3A	22 2004 12	Rubber packing	2	2	2	Upto Dec.02
4	06 2010 83	Lamp 12v 5w	4	4	4	For side & reverse lamp
5	30 2010 06	Lamp 12v 10/5w	2	2	2	For stop tail
6	AA 2010 90	Bkt for tail lamp	4	4	4	
7	39 0798 15	Flange nut	8	8	8	
8	22 2004 17	Rubber packing	2	2	2	For BA201048



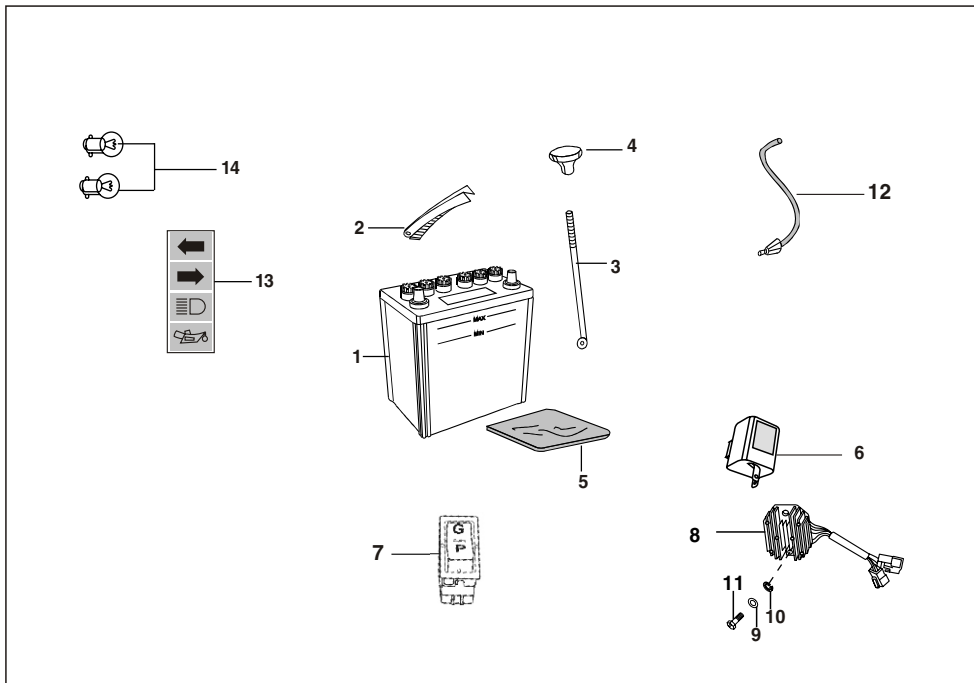
No.	Part No.	Description	Qty/Veh.			Remarks
			24	AG	AS	
1	24 2012 63	Control switch RH	1	1	1	
2	24 2011 75	Main switch cover	1	1	1	
3	39 1403 01	Screw	2	2	2	
4	24 2011 64	Switch assembly complete LH	1	1	1	
5	24 2011 89	Switch cover LH	1	1	1	
6	06 2012 84	Fuse 10 Amp.	2	2	2	
7	06 2013 25	Fuse Box	1	--	--	For vehicles with 12V system



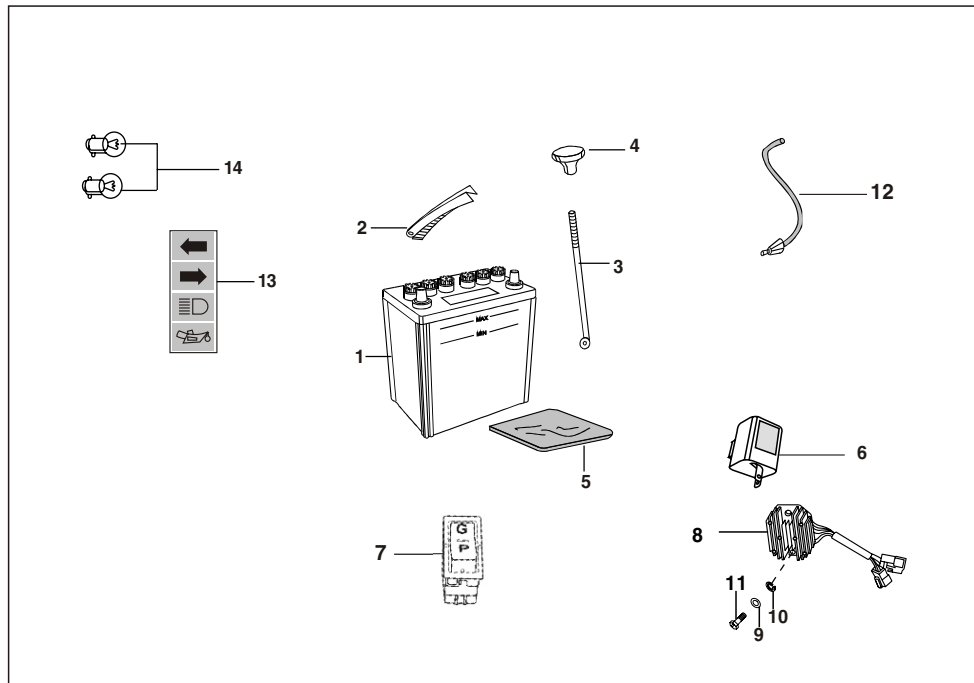
No.	Part No.	Description	Qty/Veh.			Remarks
			24	AG	AS	
1	AL 2010 61	Control switch RH	1	1	1	For new handle bar
2	AL 2010 87	Switch cover RH	1	1	1	
3	AL 2010 62	Screw	4	4	4	
4	AL 2010 60	Control switch LH	1	1	1	For new handle bar
5	AL 2010 86	Switch cover LH	1	1	1	
6	24 2013 28	ON/OFF Parking switch	1	1	1	From Nov. 06 6 pole coupler
	24 2013 09	ON/OFF Parking switch	1	1	1	From May 06 to Oct. 06 Parking s/w introduced Upto Apr. 06
	24 2011 67	ON/OFF switch	1	1	1	
7	AP 2010 12	Label parking OFF/ON switch	1	1	1	
8	AA 2011 56	Horn (DC)	1	1	1	
9	39 1698 01	Screw pan	2	2	2	
10	39 0197 11	Plain washer	2	2	2	
11	39 0262 12	Spring washer	2	2	2	
12	AF 2010 94	Rear brake switch	1	1	1	Maruti type switch
13	AF 2010 82	Cabin light assembly	1	1	1	From April.04
14	39 0080 04	Cheese head screw	4	4	4	
15	39 0375 11	Plain washer	4	4	4	



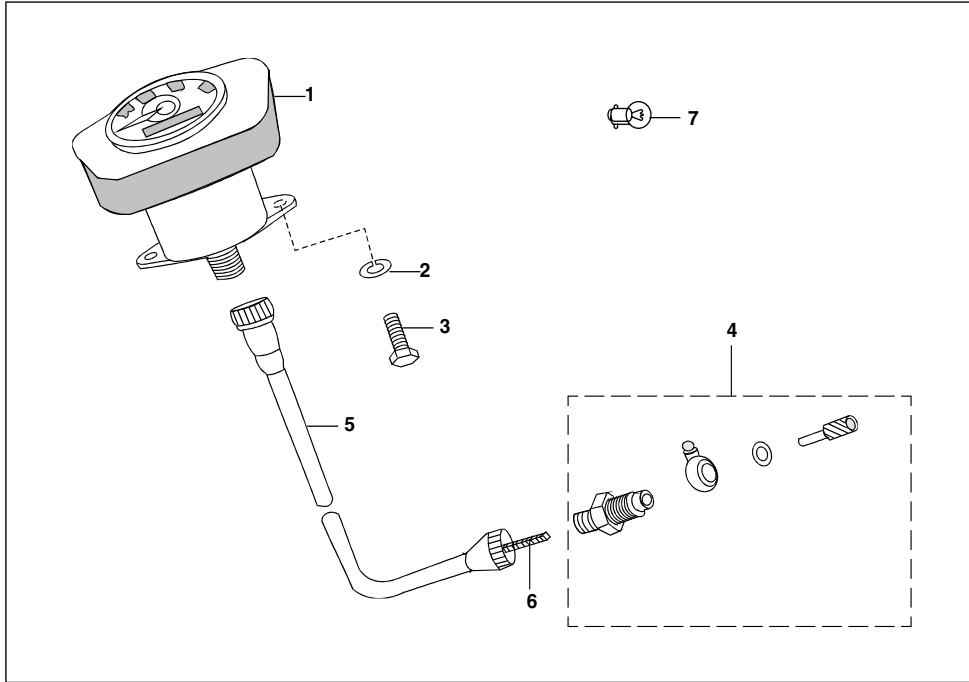
No.	Part No.	Description	Qty/Veh.			Remarks
			24	AG	AS	
16	39 1831 12	Spring washer	4	4	4	
17	AB 2010 76	Relay Flasher	4	1	1	
18	AB 2010 77	Hazard Switch	4	1	1	
19	24 2013 42	Choke switch	--	1	--	



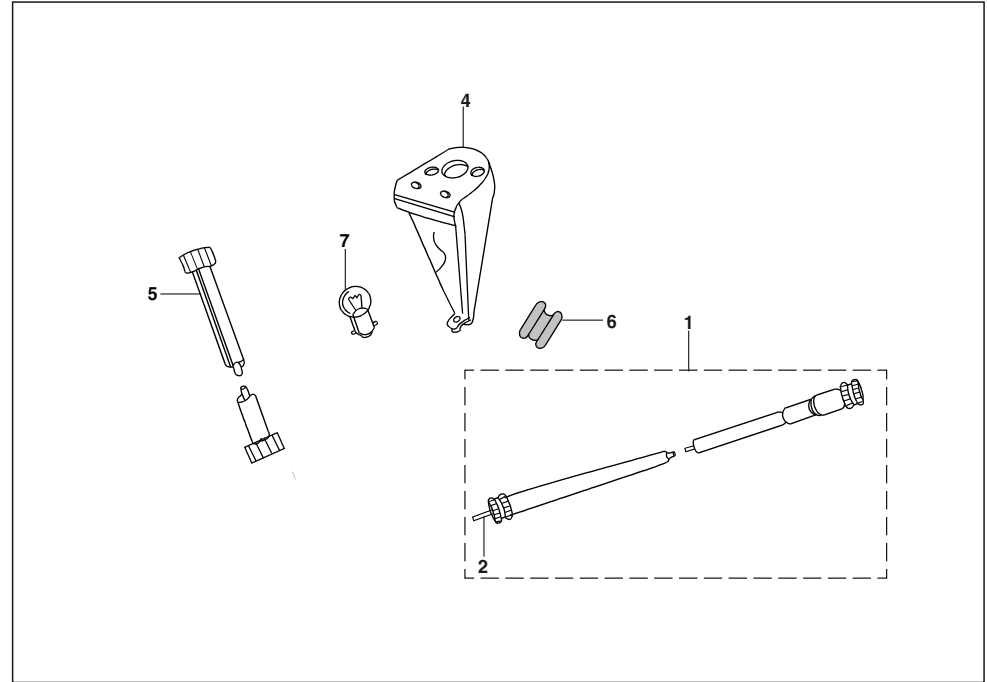
No.	Part No.	Description	Qty/Veh.			Remarks
			24	AG	AS	
1	24 2011 68	Battery (Dry charged)	1	1	1	
2	22 1611 28	Clamp assembly	1	1	1	
3	22 1611 31	Tie rod	1	1	1	
4	01 1401 17	Knob	1	1	1	
5	24 2013 05	Rubber packing	1	1	1	
6	AP 2010 21	Flasher hazard	1	1	1	
7	AF 2010 53	Selector switch (gas/petrol)	--	1	1	
8	24 2012 77	Assembly regulator	1	1	1	
9	39 0197 11	Plain Washer	3	3	3	
10	39 0262 12	Spring washer	3	3	3	
11	39 0085 04	Hex head screw	3	3	3	
12	20 2010 17	Switch assembly reverse lamp	1	1	1	For vehicles with 12V system



No.	Part No.	Description	Qty/Veh.			Remarks
			24	AG	AS	
13	24 2013 03	Assly light indicator	1	--	--	From Mar. 06
	24 2012 82	Assly light indicator	1	--	--	From Jan. 03 to Feb. 06
	24 2012 64	Assly light indicator	1	--	--	Upto Dec.02
	24 2013 34	Assly light indicator	--	1	1	For Vanaz kit
	24 2013 04	Assly light indicator	--	1	1	From Mar. 06 Minda Kit
14	24 2012 83	Assly light indicator	--	1	1	Upto Feb. 06 (Minda Kit)
	30 2010 84	Lamp 12V 2W	2	2	2	



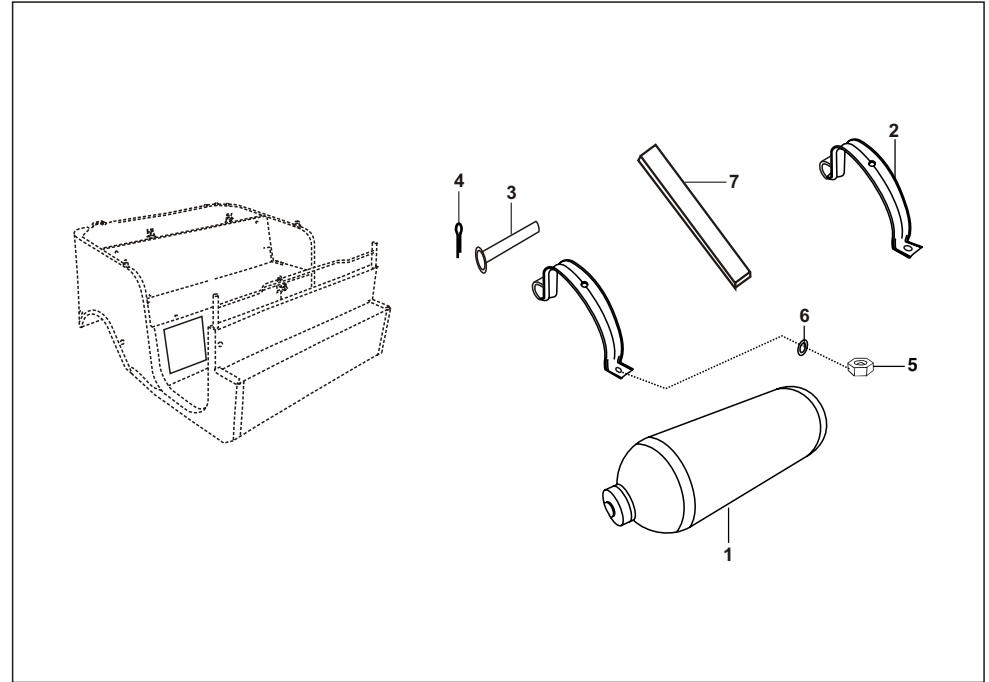
No.	Part No.	Description	Qty/Veh.			Remarks
			24	AG	AS	
1	24 1910 89	Speedometer complete	1	--	--	
	24 1911 08	Speedometer complete	--	1	1	
2	39 0262 12	Spring washer	2	2	2	
3	39 1350 01	Hexagon screw	2	2	2	
4	05 1903 01	Speedometer drive complete	1	1	1	
5	22 1910 96	Speedometer cable complete	1	1	1	
	06 1902 26	Speedometer cable complete	1	1	1	
6	22 1910 97	Speedometer cable inner	1	1	1	
	AA 1910 51	Speedometer cable inner	1	1	1	
7	25 1910 54	Lamp 12V 2w	1	1	1	



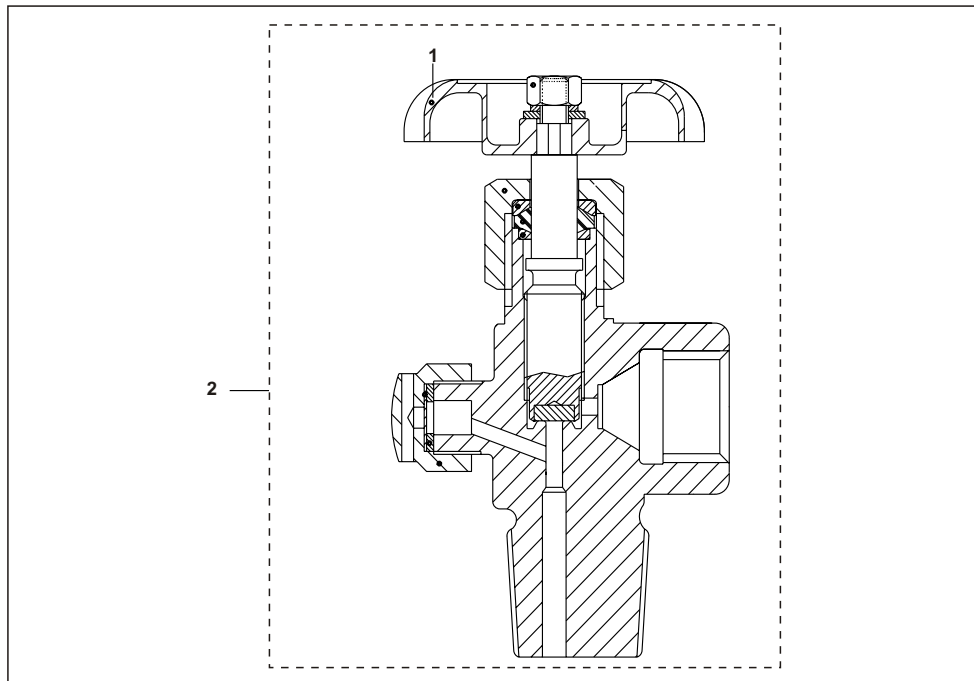
No.	Part No.	Description	Qty/Veh.			Remarks
			24	AG	AS	
1	22 2510 01	Cable assly. complete	1	1	1	For Fare Meter (N.I.)
2	AA 2510 03	Inner cable	1	1	1	
3	22 2501 32	Electric Cable Assly.	1	1	1	
4	22 2501 03	Rickshaw meter housing	1	1	1	
5	AA 251001	Fare meter cable comp.	1	1	1	
6	22 2501 18	Grommet	1	1	1	
7	06 2010 82	Lamp 12 V 5 W	1	1	1	



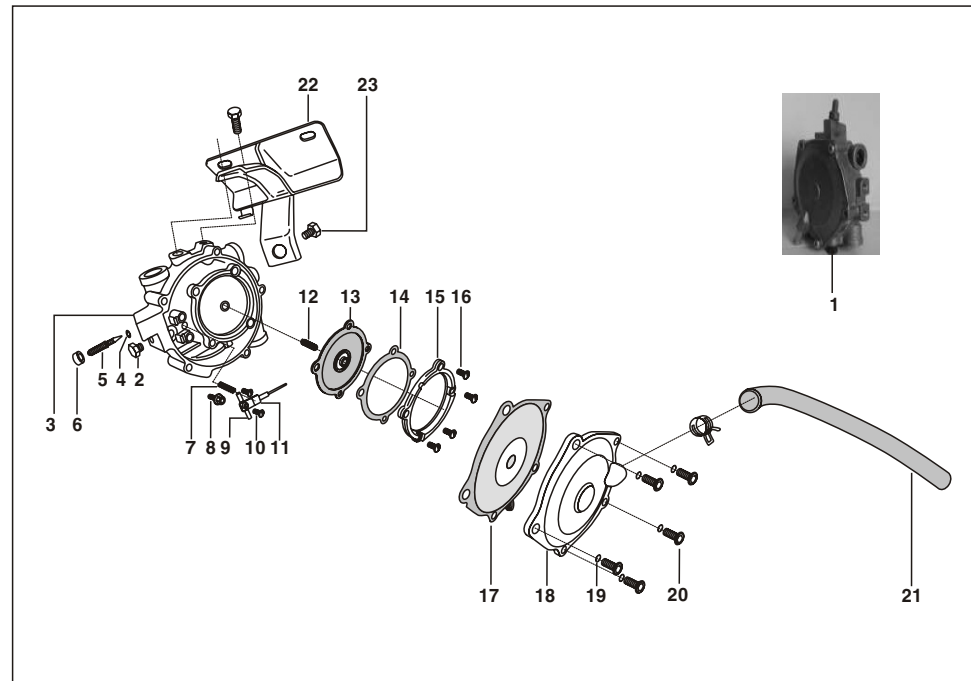
No.	Part No.	Description	Qty/Veh.			Remarks
			24	AG	AS	
1	24 2210 27	Tool kit complete	1	1	1	
	24 2210 19	Tool bag *	1	1	1	
	24 2210 22	Flat Spanner 7x8	1	1	1	
	24 2210 24	Flat Spanner 13x14	1	1	1	
	24 2210 26	Spanner tube	1	1	1	
	05 2202 06	Tommy bar	1	1	1	
	24 2210 28	Tool plier	1	1	1	
	DJ 2210 14	Screw driver	1	1	1	
	22 2210 16	Polythene bag	1	1	1	
	2	AA 2210 05	Mirror assly. LH	1	1	1
3	AA 2210 06	Mirror assly. RH	1	1	1	
4	21 1704 16	Plain washer	4	4	4	
5	39 1829 12	Spring washer	2	2	2	
6	39 0296 15	Hex nut	4	4	4	



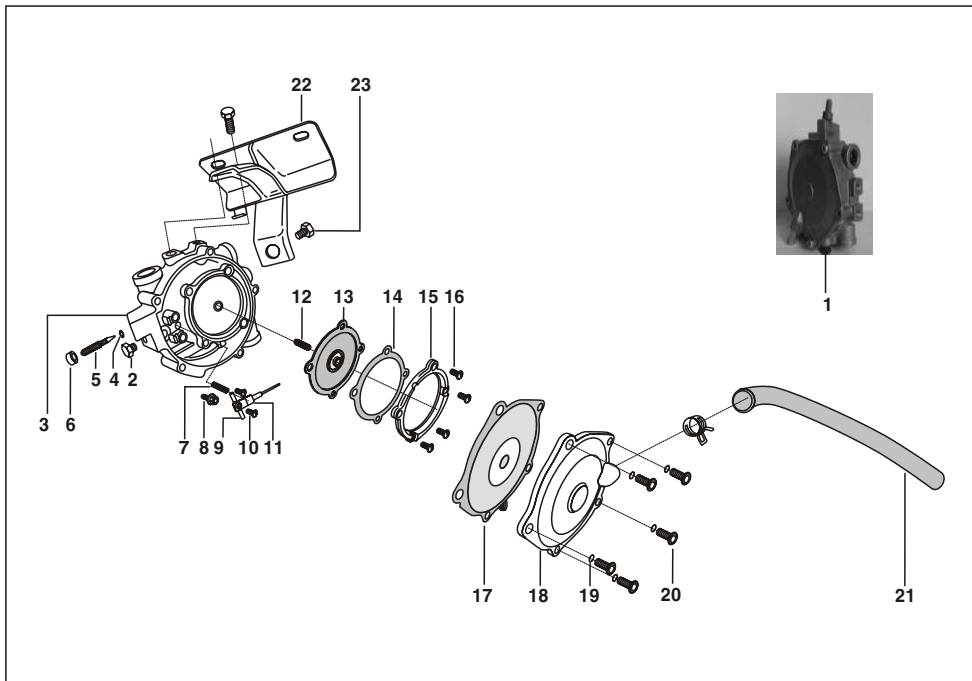
No.	Part No.	Description	Qty/Veh.			Remarks
			24	AG	AS	
1	AM 1410 03	LPG Cylinder	--	1	--	20 Lits. water capacity
	24 1411 01	LPG cylinder	--	1	--	15 lits Water capacity
	AF 1410 59	CNG cylinder	--	--	1	W/o valve EKC 267
	AF 1410 57	CNG cylinder	--	--	1	W/o valve Argentoil 273
	AF 1410 54	CNG cylinder	--	--	1	W/o valve Worthington 270
	AF 1410 52	CNG cylinder	--	--	1	W/o valve Faber 266
	2	24 1613 51	Strap for LPG cylinder	--	2	--
2	AF 1610 98	Assly Strap	--	2	2	From 30.05.08
	AF 1610 55	Strap for CNG cylinder	--	--	2	Upto 29.05.08
3	AF 1610 59	Pin for cylinder clamping strip	--	2	2	
4	39 0146 08	Split pin	--	2	2	
5	39 0302 15	Hexagon nut (M10 X1.5)	--	4	4	For clamping cyl.
6	39 02 01 11	Plain washer	--	4	4	For clamping cyl.
7	AF 1610 97	Beading Strap	--	2	2	From 30.05.08
	AF 1610 54	Packing upper	--	2	2	Upto 29.05.08
	AF 1610 56	Packing lower	--	2	2	Upto 29.05.08
	24 1613 72	Packing lower	--	2	--	For AM 1410 03



No.	Part No.	Description	Qty/Veh.			Remarks
			24	AG	AS	
1	AF 1410 08	Hand wheel	--	--	1	
2	AF 1410 30	Valve for CNG	--	--	1	

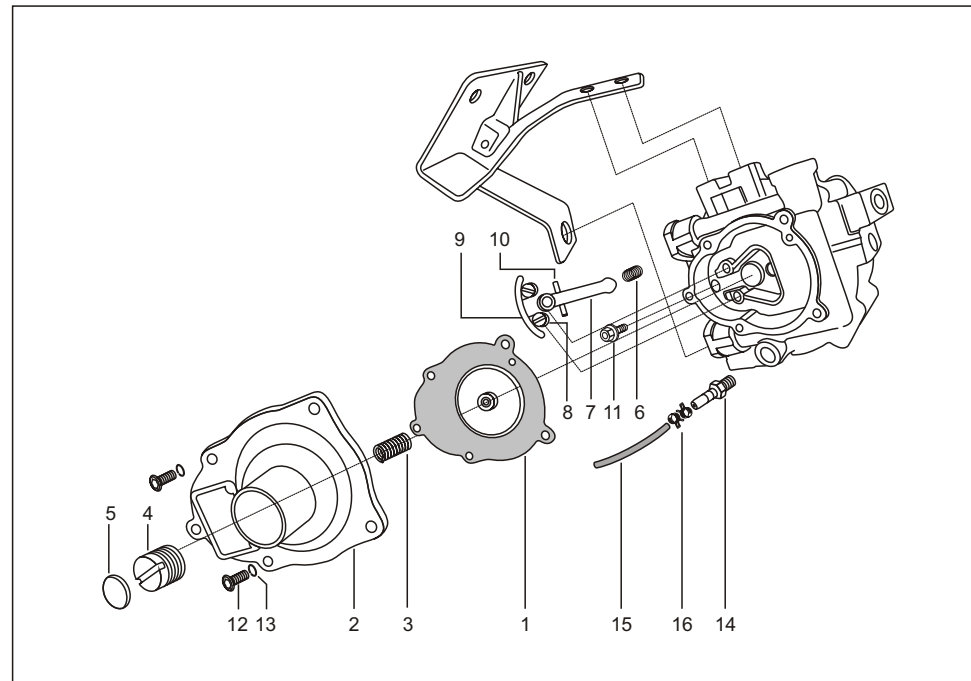


No.	Part No.	Description	Qty/Veh.			Remarks
			24	AG	AS	
1	24 1211 61	Regulator T-60	--	--	1	
2	AF 1212 30	Plug 1/8" - 27 NPT	--	--	3	
3	AF 1212 31	Body T-60 with idle bushing	--	--	1	
4	AF 1213 50	"O" ring	--	--	1	
5	AF 1212 54	Screw adjustment (idle screw)	--	--	1	
6	AF 1212 49	Lock nut	--	--	1	
7	AF 1212 50	Spring secondary lever	--	--	1	
8	AF 1212 53	Orifice secondary regulator	--	--	1	
9	AF 1212 51	Pin secondary pivot	--	--	1	
10	AF 1212 59	Screw 10-32 UNF-2A	--	--	1	
11	AF 1212 52	Lever secondary	--	--	1	
12	AF 1212 45	Spring, vacuum lock	--	--	1	
13	AF 1212 44	Diaphragm. vacuum lock assly	--	--	1	
14	AF 1212 62	Gasket, diaphragm	--	--	1	
15	AF 1212 49	Ring vacuum lock	--	--	1	



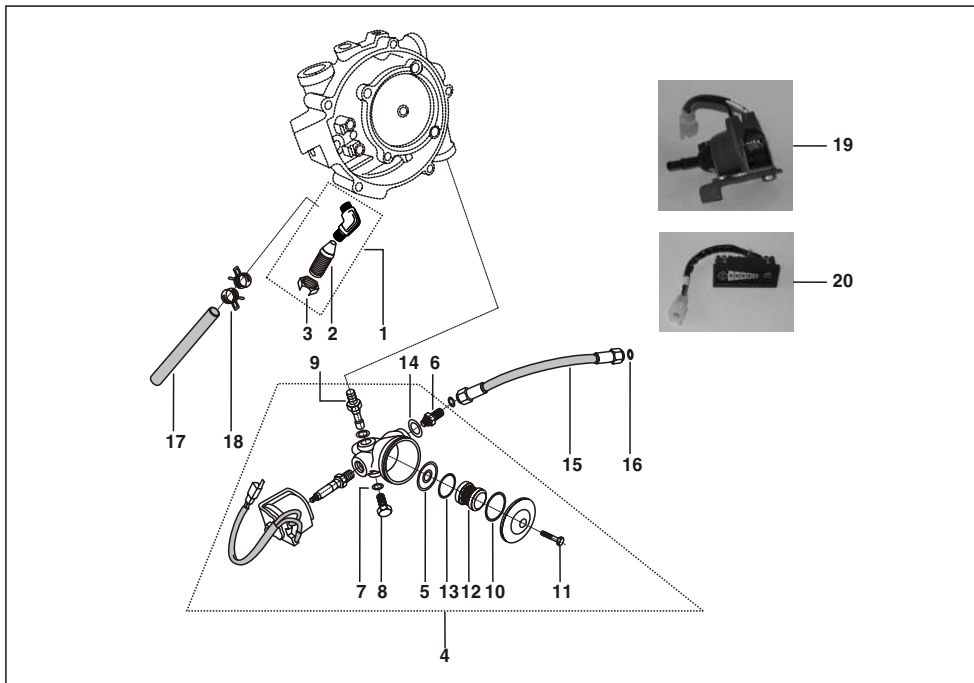
No.	Part No.	Description	Qty/Veh.			Remarks
			24	AG	AS	
16	AF 1212 48	Screw 10-32 UNF-2A	--	--	4	
17	AF 1212 46	Diaphragm, secondary assly.	--	--	1	
18	24 1211 81	Cover secondary regulator	--	--	1	
19	AF 1212 64	Washer split lock	--	--	5	
20	AF 1212 42	Screw 10-32 UNF-2A	--	--	5	
21	AF 1213 45	Hose breather	--	--	1	
22	24 1211 90	Bracket LPR mounting	--	--	1	
23	AF 1213 32	Bolt 1/4" NPT	--	--	1	

24 - RE 2S PETROL
AG - RE 2S LPG
AS - RE 2S CNG

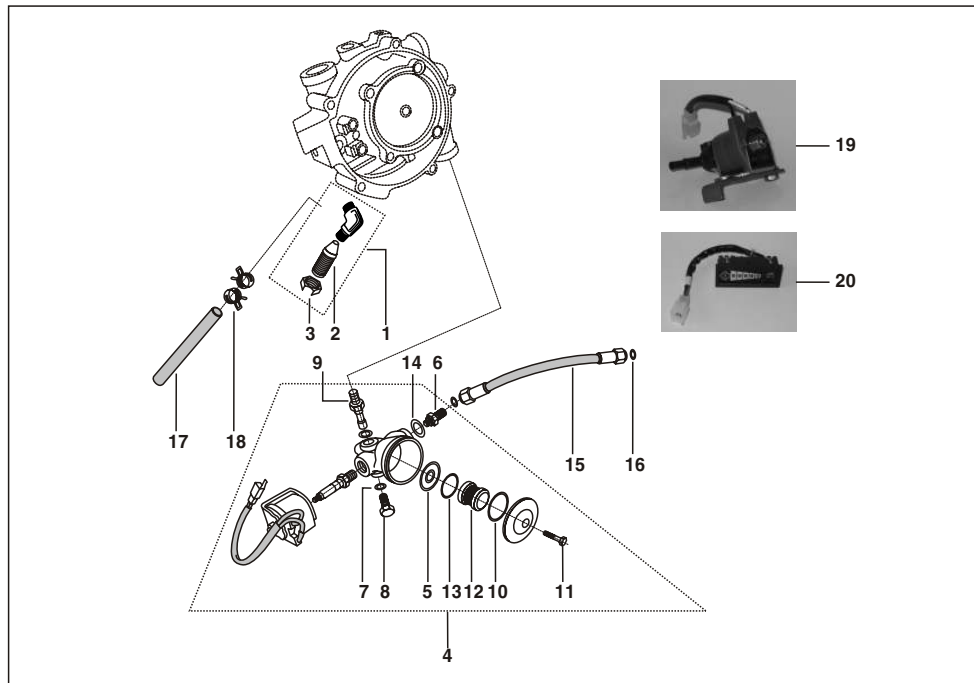


No.	Part No.	Description	Qty/Veh.			Remarks
			24	AG	AS	
1	AF 1212 32	Primary diaphragm assly	--	--	1	
2	AF 1212 33	Cover primary regulator	--	--	1	
3	AF 1212 34	Spring primary	--	--	1	
4	AF 1212 35	Screw, retainer, adjustable spring	--	--	1	
5	AF 1212 36	Plug expansion	--	--	1	
6	AF 1212 37	Spring, primary lever	--	--	1	
7	AF 1212 38	Lever assly primary	--	--	1	
8	AF 1212 39	Screw 10-32 UNF-2A	--	--	1	
9	AF 1212 40	Bridge primary	--	--	1	
10	AF 1212 41	Pin primary pivot	--	--	1	
11	AF 1212 43	Orifice primary regulator	--	--	1	
12	AF 1212 42	Screw 10-32 UNF-2A	--	--	1	
13	AF 1212 64	Washer, split lock	--	--	1	
14	AF 1212 82	Connector 1/8"	--	--	1	NPT x 4.5mm hose
15	24 1211 49	Hose vacuum	--	--	1	
16	AF 1213 30	Clamp spring band	--	--	2	

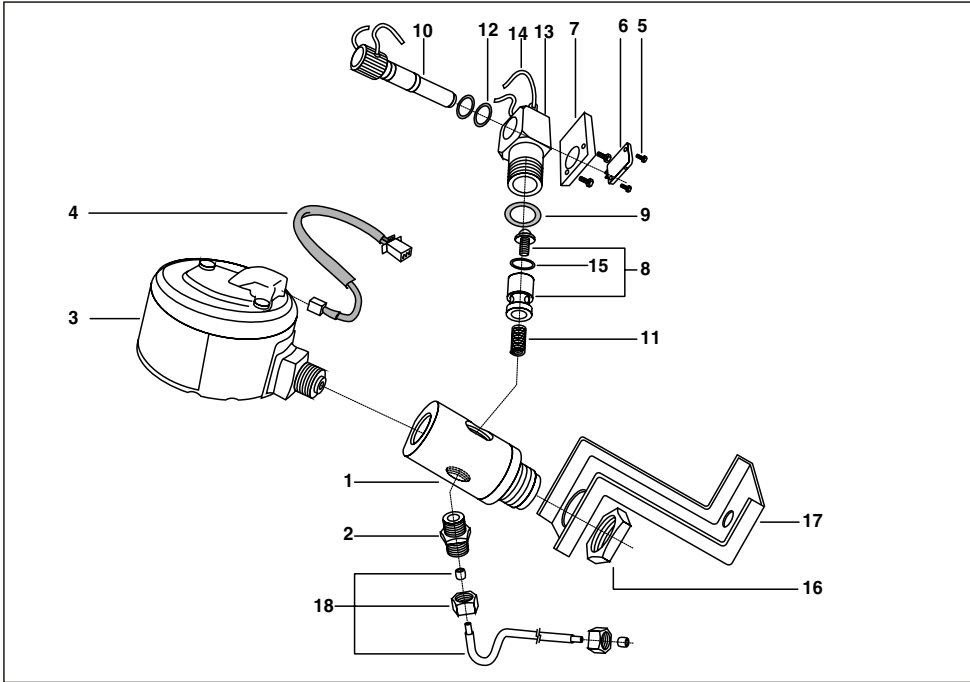
24 - RE 2S PETROL
AG - RE 2S LPG
AS - RE 2S CNG



No.	Part No.	Description	Qty/Veh.			Remarks
			24	AG	AS	
1	AF 1212 65	Power valve assly.	--	--	1	
2	AF 1212 67	Power screw	--	--	1	
3	AF 1212 68	Lock nut	--	--	1	
4	AF 2010 71	Gas solenoid valve assly	--	--	1	
5	AF 2011 05	Nylon mesh filter	--	--	1	
6	AF 1213 57	Connector straight	--	--	1	
7	59 2100 02	"O" ring F9.25x62	--	--	1	
8	59 0100 04	Screw	--	--	1	
9	AM 1210 48	Threaded fitting union	--	--	1	
10	59 2100 04	"O" ring F34.6x2.62	--	--	1	
11	59 0400 22	Bolt M8x35	--	--	1	
12	AM 1210 51	Assly. paper filter	--	--	1	
13	59 2100 05	"O" ring F26.7x1.8	--	--	1	

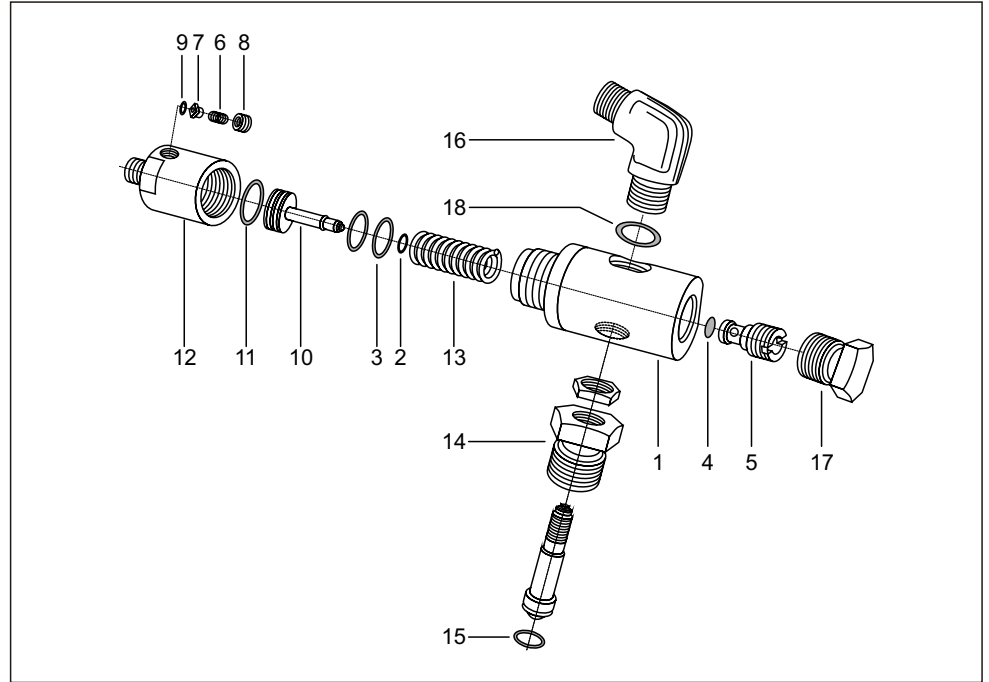


No.	Part No.	Description	Qty/Veh.			Remarks
			24	AG	AS	
14	59 1100 01	Washer copper	--	--	1	
15	24 1211 57	Hose high pressure	--	--	1	
16	AF 1210 12	Nylon washer	--	--	1	
17	24 1211 56	Hose low pressure	--	--	1	
18	AF 1213 47	Clamp spring band	--	--	2	
19	24 2012 87	Petal solenoid valve assly	--	--	1	
20	AF 2010 73	Electronic level indicator	--	--	1	



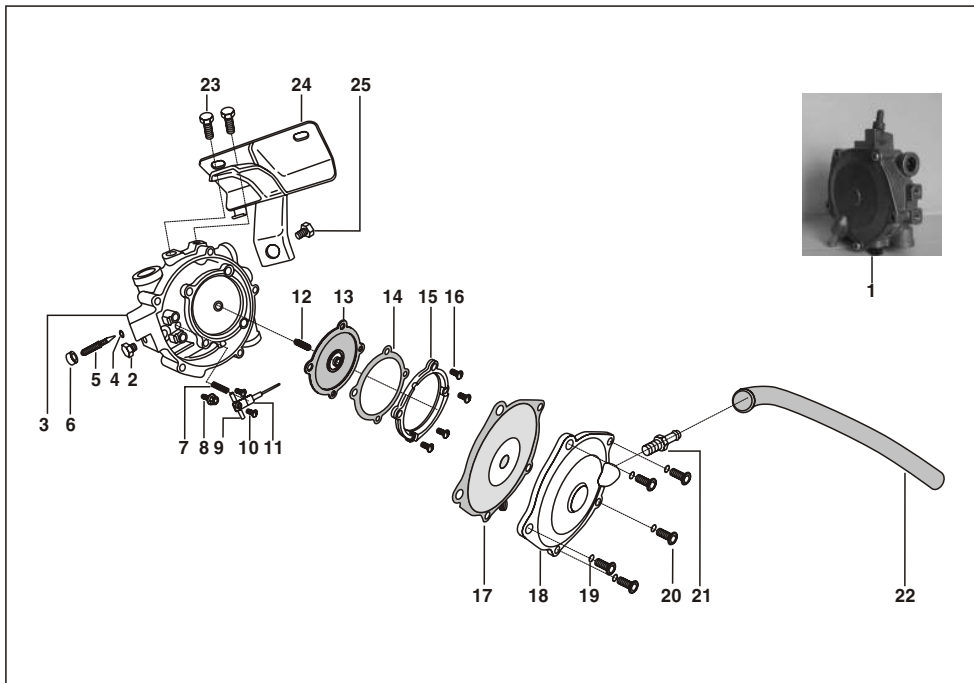
No.	Part No.	Description	Qty/Veh.			Remarks
			24	AG	AS	
1	24 1211 63	Remote filler valve body	--	--	1	
2	24 1211 64	Connector for remote filler valve	--	--	1	
3	AF 2010 74	pressure gauge	--	--	1	
4	AF 2011 04	Wiring harness	--	--	1	
5	AF 1212 17	Screw socket head M3 x 17	--	--	4	
6	AF 2010 15	Micro switch	--	--	1	12v DC, 16A, 3 pin
7	AF 1212 16	Base plate-microswitch	--	--	1	
8	AF 1212 13	Plunger filler valve	--	--	1	
9	AF 1212 15	Washer copper	--	--	1	
10	AF 1212 14	Plunger filler valve	--	--	1	
11	AF 1212 11	Spring filler valve	--	--	1	
12	AF 1212 22	"O" ring plug	--	--	2	
13	AF 1212 10	Body filler valve	--	--	1	
14	AF 1212 24	Spring filler valve	--	--	1	
15	AF 1213 43	"O" ring NRV	--	--	1	
16	24 1211 65	Lock nut M20 x 1.5 A/F28	--	--	1	
17	24 1211 79	Bracket remote filler valve	--	--	1	
18	24 1211 59	Steel tube assly.	--	--	1	

24 - RE 2S PETROL
AG - RE 2S LPG
AS - RE 2S CNG

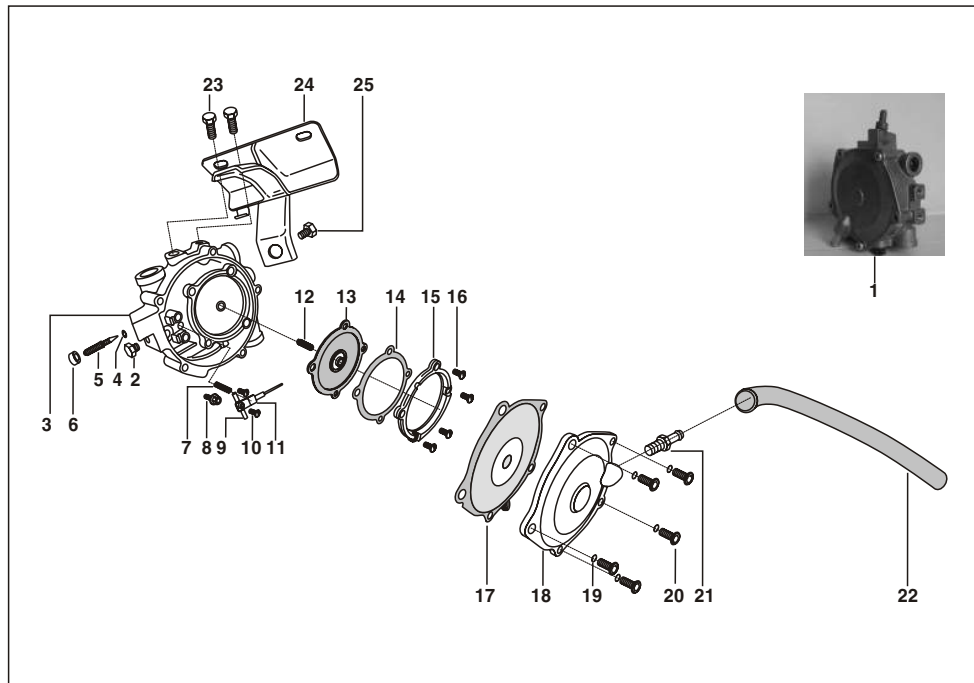


No.	Part No.	Description	Qty/Veh.			Remarks
			24	AG	AS	
1	AF 1212 02	Body inlet	--	--	1	
2	AF 1212 12	"O" ring stem	--	--	1	
3	AF 1212 20	"O" ring piston	--	--	2	
4	AF 1213 41	Filter	--	--	1	
5	AF 1213 42	Retainer filter	--	--	1	
6	AF 1212 07	Spring - relief valve	--	--	1	
7	AF 1212 08	Head - relief valve	--	--	1	
8	AF 1212 09	Cap - relief valve	--	--	1	
9	AF 1212 23	Insert	--	--	1	
10	AF 1212 04	Piston	--	--	1	
11	AF 1212 06	"O" ring body	--	--	1	
12	AF 1212 03	Body outlet	--	--	1	
13	AF 1212 05	Compression spring	--	--	1	
14	AF 1212 28	Connector Cy. valve	--	--	1	
15	59 2100 11	"O" ring connector HRP	--	--	1	
16	24 1211 68	Connector elbow	--	--	1	
17	24 1211 67	Plug HPR 30 A	--	--	1	
18	AF 1212 15	Washer copper	--	--	1	

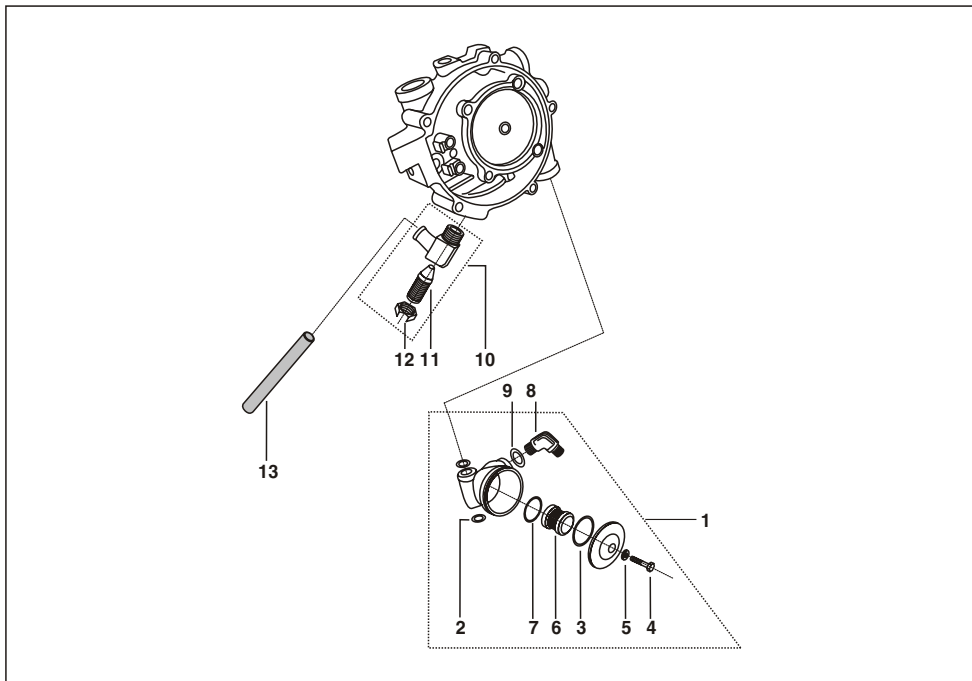
24 - RE 2S PETROL
AG - RE 2S LPG
AS - RE 2S CNG



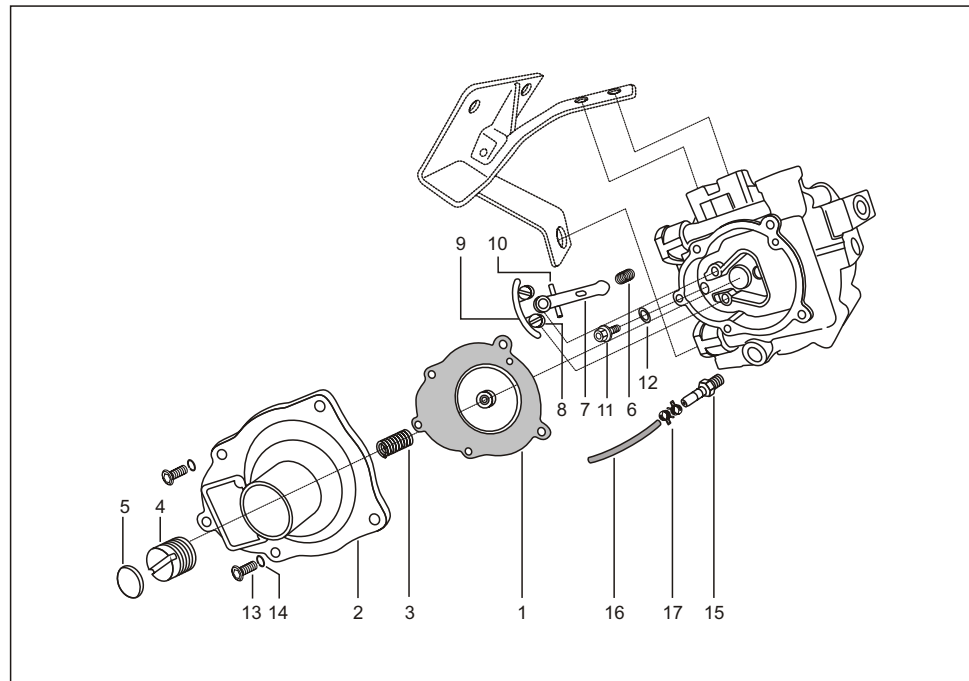
No.	Part No.	Description	Qty/Veh.			Remarks
			24	AG	AS	
1	24 1211 77	Regulator T-60	--	1	--	
2	AF 1212 30	Plug 1/8" 27 NPT	--	2	--	
3	AF 1212 31	Body T-60 with idle bushing	--	1	--	
4	AF 1213 50	"O" ring	--	1	--	
5	AF 1212 54	Screw adjustment (idle screw)	--	1	--	
6	AF 1213 49	Lock nut	--	1	--	
7	AF 1212 50	Spring	--	1	--	
8	AF 1212 53	Orifice, secondary regulator	--	1	--	
9	AF 1212 51	Pin secondary pivot	--	1	--	
10	AF 1212 59	Screw 10-32 UNF-2A	--	2	--	
11	AF 1212 52	Lever secondary	--	1	--	
12	AF 1212 43	Spring, vacuum lock	--	1	--	
13	AF 1212 44	Diaphragm, vacuum lock assly	--	1	--	
14	AF 1212 62	Gasket, diaphragm	--	1	--	
15	AF 1212 49	Ring, vacuum lock	--	1	--	



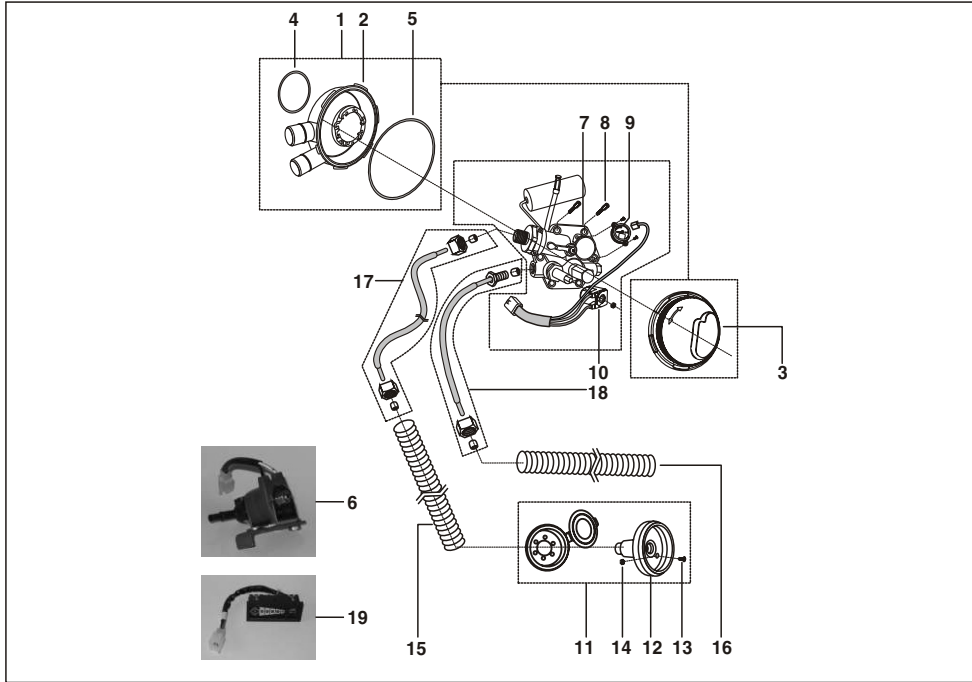
No.	Part No.	Description	Qty/Veh.			Remarks
			24	AG	AS	
16	AF 1212 48	Screw 10-32 UNF-2A	--	4	--	
17	AF 1212 46	Diaphragm secondary assly	--	1	--	
18	24 1211 81	Cover secondary regulator	--	1	--	
19	AF 1212 64	Washer, split lock	--	5	--	
20	AF 1212 42	Screw 10-32 UNG-2A	--	5	--	
21	AF 1213 44	Connector straight	--	1	--	
22	AF 1213 45	Hose breather	--	1	--	
23	AF 1212 31	Bolt hex 1/4"-20 UNF	--	2	--	
24	24 1211 90	Bracket LPR mounting	--	1	--	
25	AF 1213 32	Bolt 1/4" NPT	--	1	--	



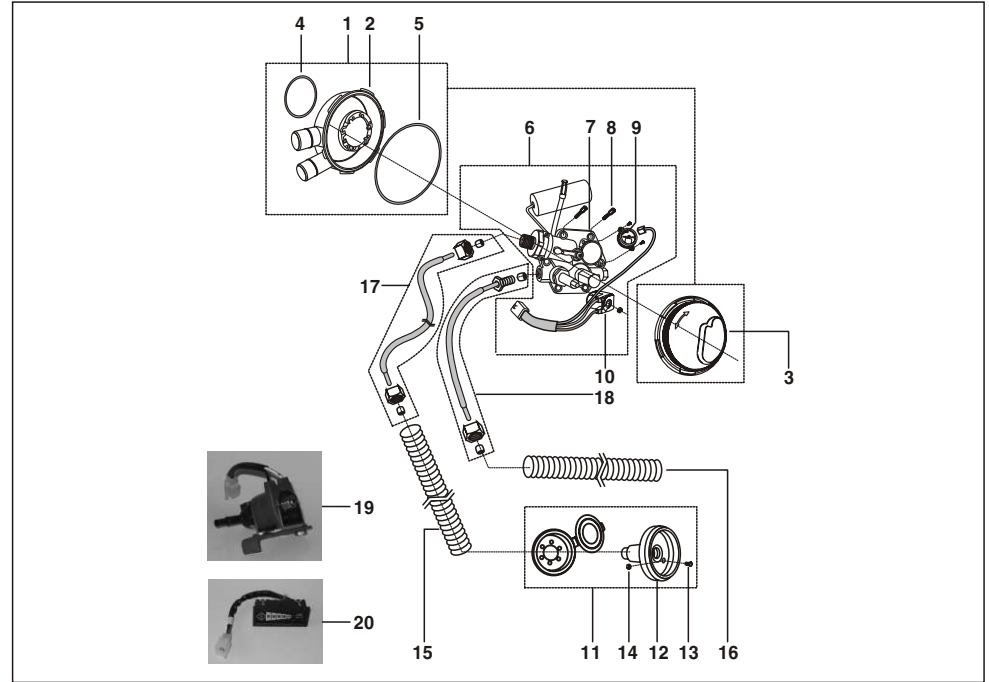
No.	Part No.	Description	Qty/Veh.			Remarks
			24	AG	AS	
1	AM 1210 43	Filter with elbow connector	--	1	--	
2	59 2100 02	"O" ring F9.25x1.8	--	2	--	
3	59 2100 04	"O" ring F34.6X2.62	--	1	--	
4	59 0400 22	Bolt M8X35	--	1	--	
5	AM 1210 49	Bonded seals	--	1	--	
6	AM 1210 51	Assly. paper filter	--	1	--	
7	59 2100 05	"O" ring F 26.7 X 1.8	--	1	--	
8	AM 1210 53	Connector elbow	--	1	--	
9	59 1100 01	Washer copper	--	1	--	
10	AF 1210 44	Power valve assly	--	1	--	
11	AF 1212 67	Power screw	--	1	--	
12	AF 1212 68	Lock nut	--	1	--	
13	24 1211 52	Hose vapour	--	1	--	



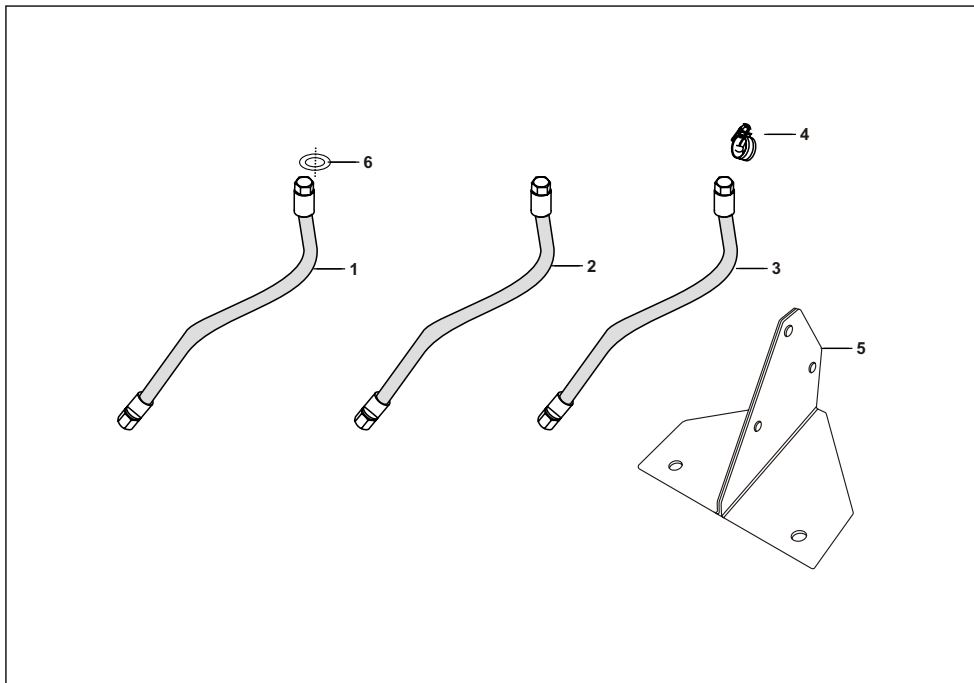
No.	Part No.	Description	Qty/Veh.			Remarks
			24	AG	AS	
1	AM 1210 30	Primary diaphragm assly	--	1	--	
2	AF 1212 33	Cover primary regulator	--	1	--	
3	AF 1212 34	Spring primary	--	1	--	
4	AF 1212 35	Screw retainer adjuster spring	--	1	--	
5	AF 1212 36	Plug expansion	--	1	--	
6	AF 1212 37	Spring primary lever	--	1	--	
7	AM 1210 31	Lever assly primary	--	1	--	
8	AF 1212 39	Screw 10-32 UNF-2A	--	2	--	
9	AF 1212 40	Bridge primary	--	1	--	
10	AF 1212 41	Pin primary pivot	--	1	--	
11	AF 1212 43	Orifice primary regulator	--	1	--	
12	AM 1210 36	Washer, orifice primary	--	1	--	
13	AF 1212 42	Screw 10-32 UNF-2A	--	5	--	
14	AF 1212 64	Washer split lock	--	5	--	
15	AF 1212 82	Connector	--	1	--	
16	24 1211 49	Hose vacuum	--	1	--	
17	AF 1213 30	Clamp spring band	--	2	--	



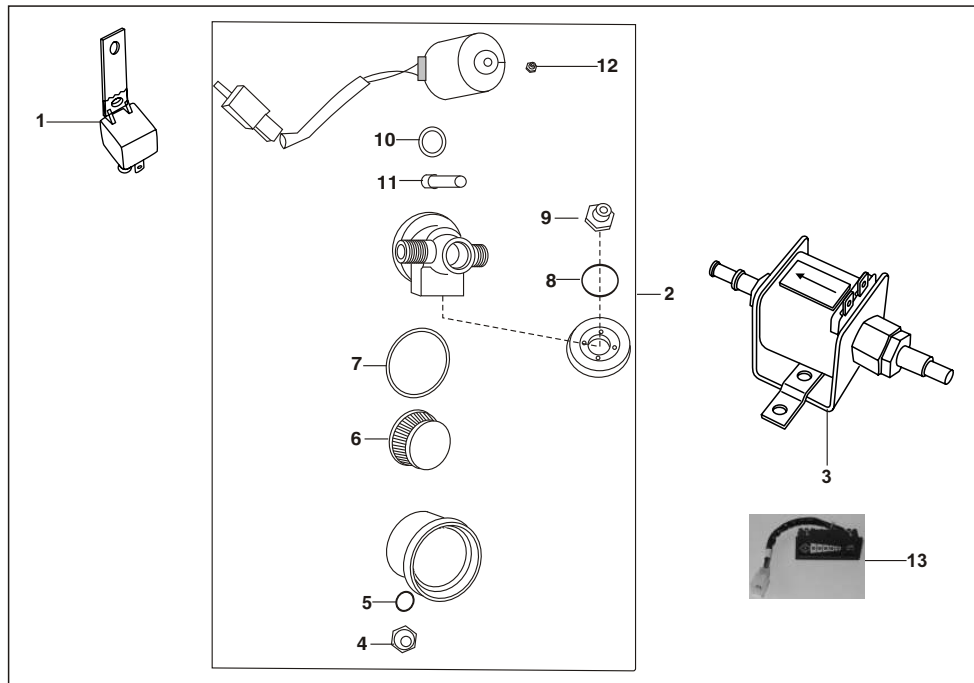
No.	Part No.	Description	Qty/Veh.			Remarks
			24	AG	AS	
1	AM 1210 13	Gas tight housing	--	1	--	
2	AM 1210 14	Body gas tight housing	--	1	--	
3	AM 1210 15	Cover gas tight housing	--	1	--	
4	AM 1210 16	"O" ring small 71 ID	--	1	--	
5	AM 1210 17	"O" ring large 145 D	--	1	--	
6	24 1211 84	Multivalve assly	--	1	--	
7	AF 2010 72	Petrol solenoid valve assly	--	1	--	
8	39 0071 04	Multivalve mounting screw	--	6	--	
9	AM 2010 29	Sendor unit	--	1	--	
10	AM 2010 21	Gas solenoid	--	1	--	
11	AM 1210 18	filler valve assly	--	1	--	
12	AM 1210 19	filler valve body	--	1	--	
13	AM 1210 21	Screw filler valve	--	2	--	
14	AM 1210 22	Nut filler valve	--	2	--	
15	24 1211 50	Vent hose	--	1	--	8 mm copper tube



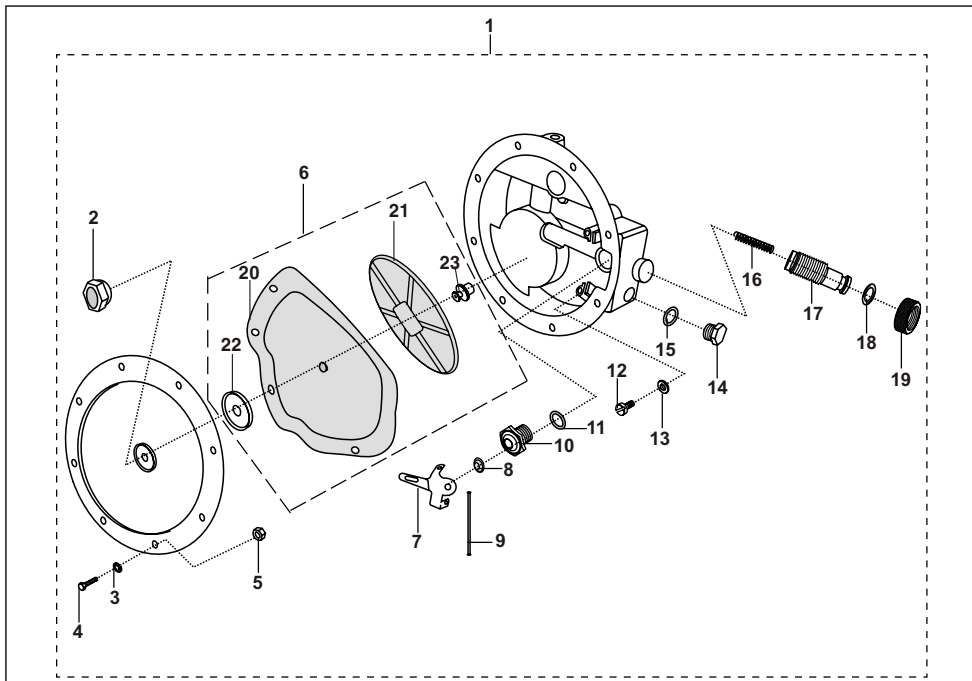
No.	Part No.	Description	Qty/Veh.			Remarks
			24	AG	AS	
16	24 1211 51	Vent hose	--	1	--	6 mm copper tube
17	24 1211 47	Fuel supply line assly	--	1	--	
18	24 1211 48	Fuel supply line	--	1	--	MV to regulator 6mm
19	AM 2010 20	Electronic level indicator	--	1	--	



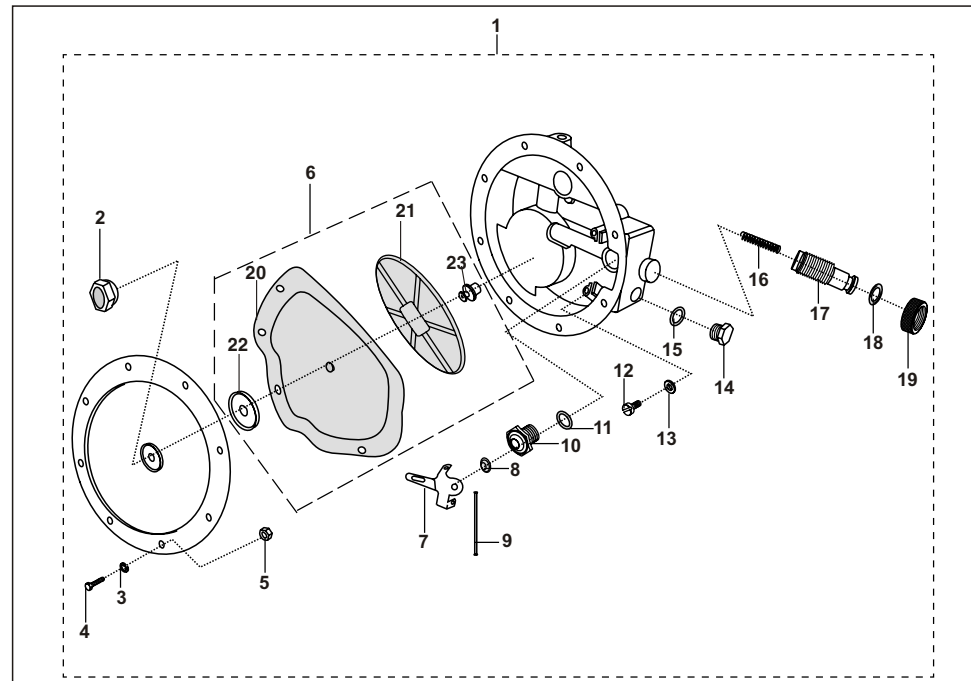
No.	Part No.	Description	Qty/Veh.			Remarks
			24	AG	AS	
1	24 1212 35	Flexible hose assly-1	--	--	1	From HPR to Filter <i>(From 05.07.09) Improved side filling</i>
	24 1212 21	Flexible hose assly-1	--	--	1	From HPR to Filter
2	24 1213 30	Flexible hose assly-2	--	--	1	From Filter to LPR
3	24 1212 22	Low pressure hose pipe	--	--	2	From LPR to Mixture
4	24 1213 54	Hose clip	--	--	4	
5	24 1212 38	Bkt. 2nd stage regulator mtg.	--	--	1	
6	AF 1210 12	Washer	--	--	4	



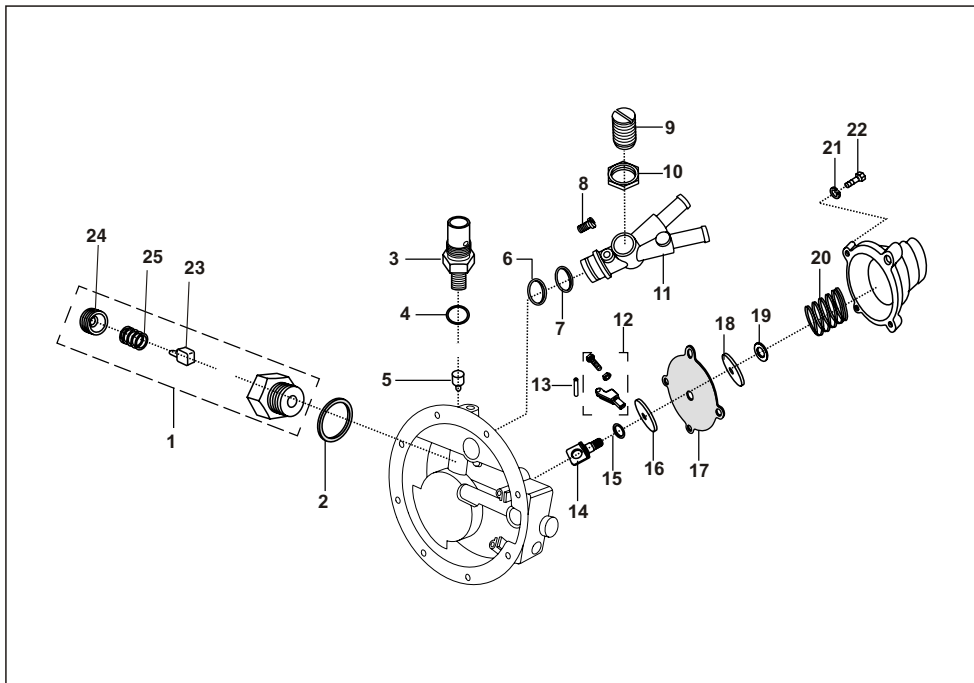
No.	Part No.	Description	Qty/Veh.			Remarks
			24	AG	AS	
1	AF 2010 01	Relay	--	--	1	
2	AF 2010 67	Solenoid -CNG paper filter	--	--	1	
3	AF 2010 13	Solenoid - petrol	--	--	1	
4	AF 1213 16	Drain plug	--	--	1	
5	AF 1213 17	'O' ring	--	--	1	
6	AF 121319	Paper filter	--	--	1	
7	AF121320	'O' ring	--	--	1	
8	AF121322	'O' ring	--	--	1	
9	AF121323	Bolt	--	--	1	
10	AF121325	'O' ring	--	--	1	
11	AF121326	Plunger assembly	--	--	1	
12	AF121327	Lock nut	--	--	1	
13	24 2013 34	Indicator assly CNG	--	--	1	



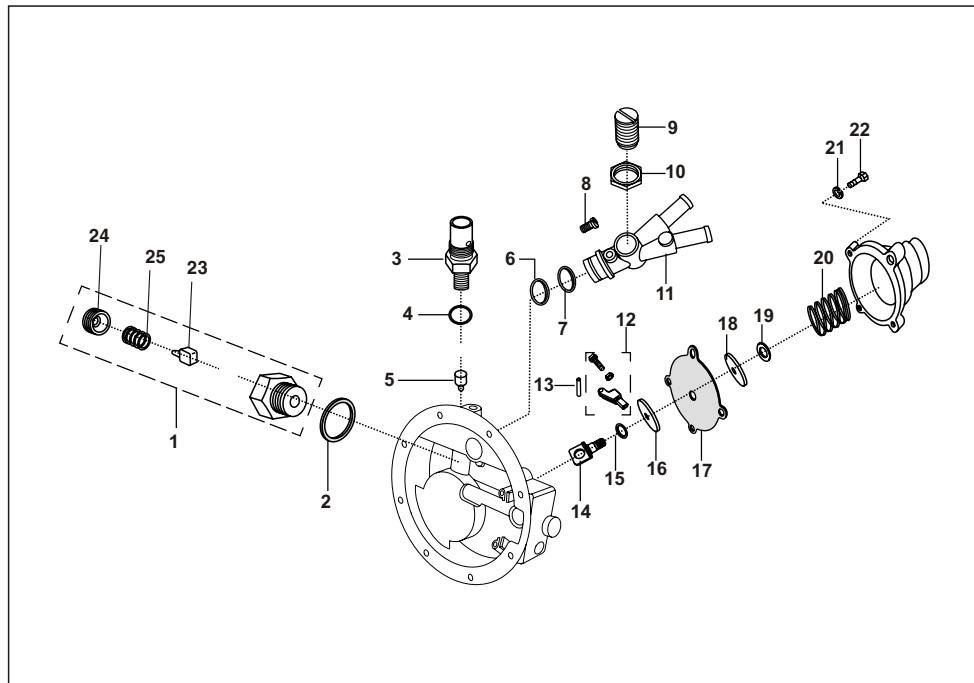
No.	Part No.	Description	Qty/Veh.			Remarks
			24	AG	AS	
1	24 1213 50	2nd stage CNG regulator	--	--	1	
2	AF 2011 07	Filter assly.	--	--	1	
3	AF 1210 49	Spring Washer	--	--	8	
4	AF 1210 50	Hex. Screw	--	--	8	
5	AF 1210 57	Nut	--	--	8	
6	AF 1211 30	Big Diaphragm sub assembly	--	--	1	
7	AF 1210 60	Lever	--	--	1	
8	AF 1210 62	Pad	--	--	1	
9	AF 1210 61	Lever Rod	--	--	1	
10	AF 1210 63	Seat	--	--	1	
11	AF 1210 64	Washer	--	--	1	
12	AF 1210 70	Cheese head screw	--	--	2	
13	AF 1210 71	Clamping washer	--	--	2	
14	AF 1210 65	Plug	--	--	1	
15	AF 1210 66	Washer	--	--	1	



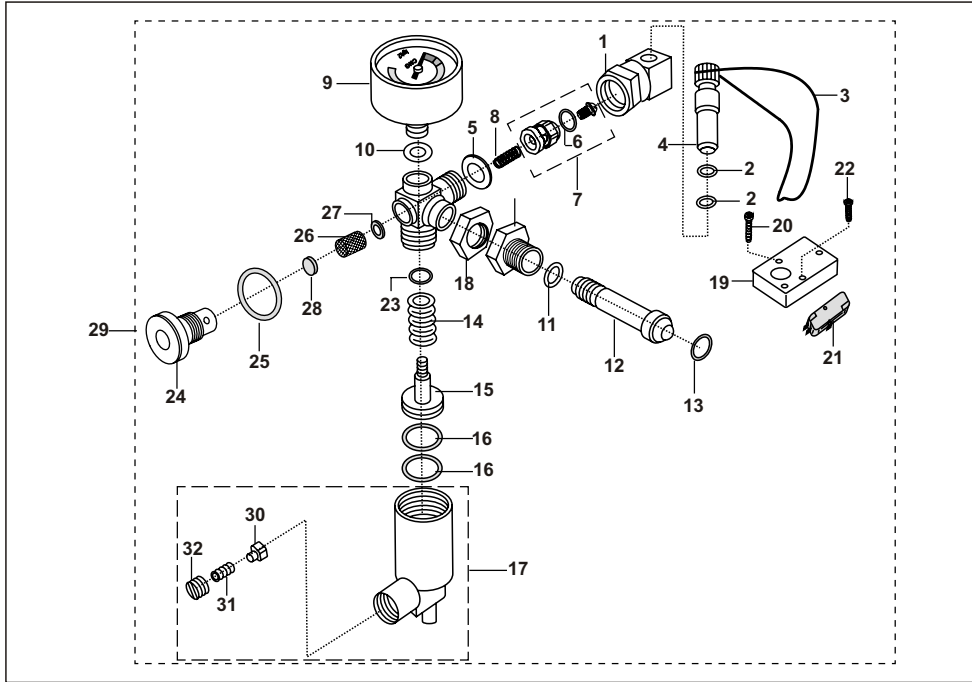
No.	Part No.	Description	Qty/Veh.			Remarks
			24	AG	AS	
16	AF 1210 89	Spring	--	--	1	
17	AF 1211 12	Spring retainer	--	--	1	
18	AF 1210 88	'O' ring	--	--	1	
19	AF 1211 11	Lock nut	--	--	1	
20	AF 1210 51	Diaphragm	--	--	1	
21	AF 1210 52	Disc bottom	--	--	1	
22	AF 1210 53	Disc top	--	--	1	
23	AF 1210 59	Support diaphragm	--	--	1	



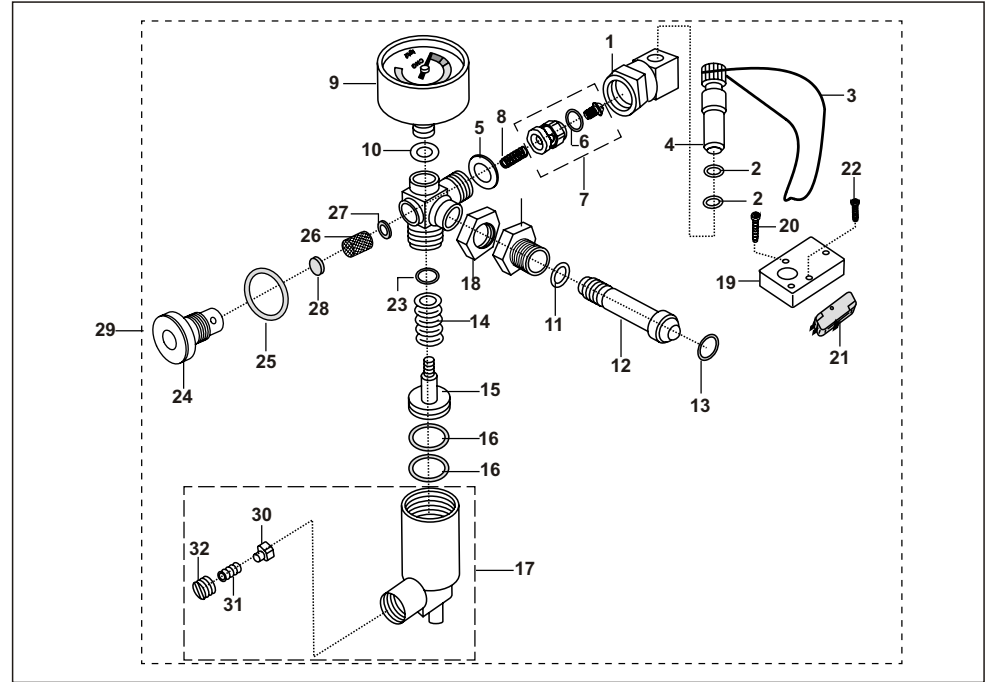
No.	Part No.	Description	Qty/Veh.			Remarks
			24	AG	AS	
1	AF 1211 29	S.R.V. Body sub assly.	--	--	1	
2	AF 1210 69	Washer	--	--	1	
3	AF 1210 86	Seat	--	--	1	
4	AF 1210 85	Washer	--	--	1	
5	AF 1211 24	Pad holder	--	--	1	
6	AF 1210 91	'O' ring	--	--	1	
7	AF 1210 93	'O' ring	--	--	1	
8	AF 1210 94	Cheese head screw	--	--	1	
9	24 1213 22	Flow adjusting screw	--	--	1	
10	24 1213 23	Lock nut	--	--	1	
11	24 1213 51	Flow control body	--	--	1	
12	AF 1210 81	Lever assly.	--	--	1	
13	AF 1210 82	Lever Pin	--	--	1	
14	AF 1210 77	Diaphragm support	--	--	1	
15	AF 1210 79	'O' ring	--	--	1	



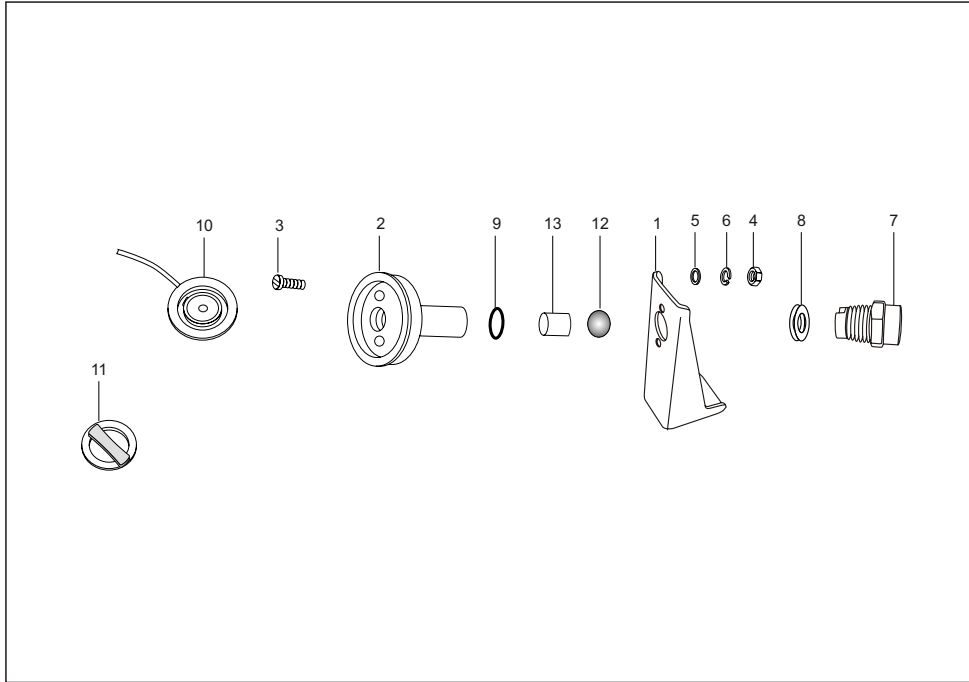
No.	Part No.	Description	Qty/Veh.			Remarks
			24	AG	AS	
16	AF 1210 73	Top disc	--	--	1	
17	AF 1210 72	Diaphragm	--	--	1	
18	AF 1210 76	Bottom disc	--	--	1	
19	AF 1210 85	Washer	--	--	1	
20	AF 1210 80	Spring	--	--	1	
21	AF 1211 16	Spring washer	--	--	4	
22	AF 1211 14	Hex. Screw	--	--	4	
23	AF 1211 87	Spring guide	--	--	1	
24	AF 1210 41	Pad	--	--	1	
25	AF 1210 67	Compression spring	--	--	1	



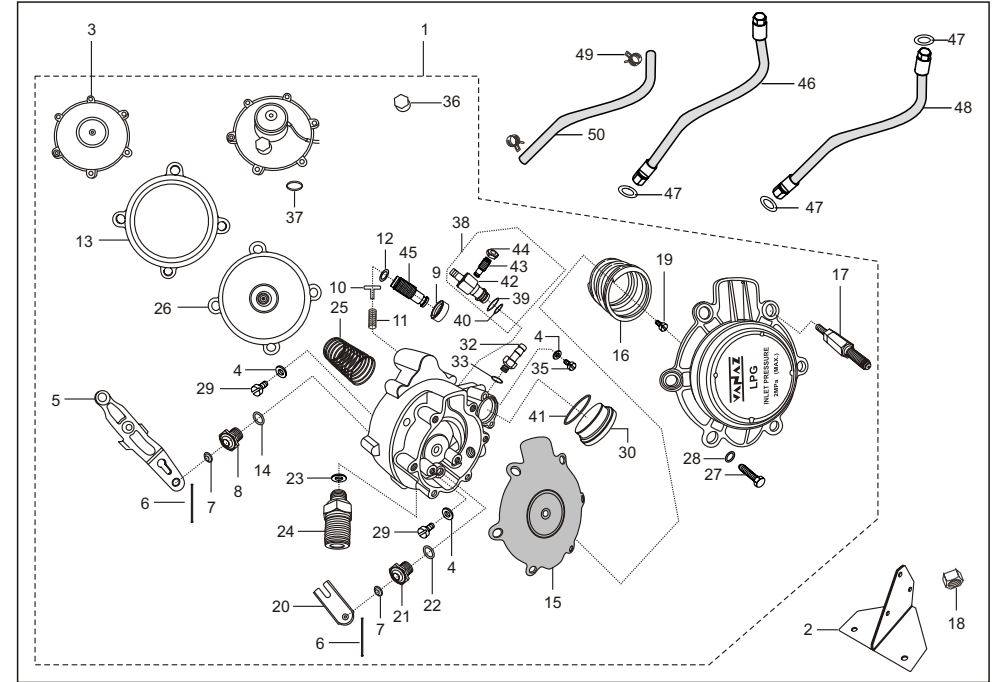
No.	Part No.	Description	Qty/Veh.			Remarks
			24	AG	AS	
1	AF 1210 04	Refueling Adaptor	--	--	1	
2	AF 1210 23	'O' ring	--	--	2	
3	AF 1210 24	String	--	--	1	
4	AF 1210 18	Dust plug	--	--	1	
5	AF 1210 25	Washer	--	--	1	
6	AF 1210 26	'O' ring	--	--	1	
7	AF 1210 27	1st stage Seat (NRV) sub assly.	--	--	1	
8	AF 1210 28	Spring	--	--	1	
9	24 2013 33	Pressure Gauge	--	--	1	
10	AF 1210 29	Washer	--	--	1	
11	AF 1210 30	Washer	--	--	1	
12	24 1214 56	Connector	--	--	1	From 05.07.09 (improved side filling)
	AF 1210 01	Connector	--	--	1	
13	AF 1210 32	'O' ring	--	--	2	
14	AF 1210 34	Spring	--	--	1	
15	AF 1211 26	Piston assly.	--	--	1	
16	AF 1210 36	'O' ring	--	--	2	
17	AF 1211 25	1st stage Cylinder (SRV) sub assly.	--	--	1	



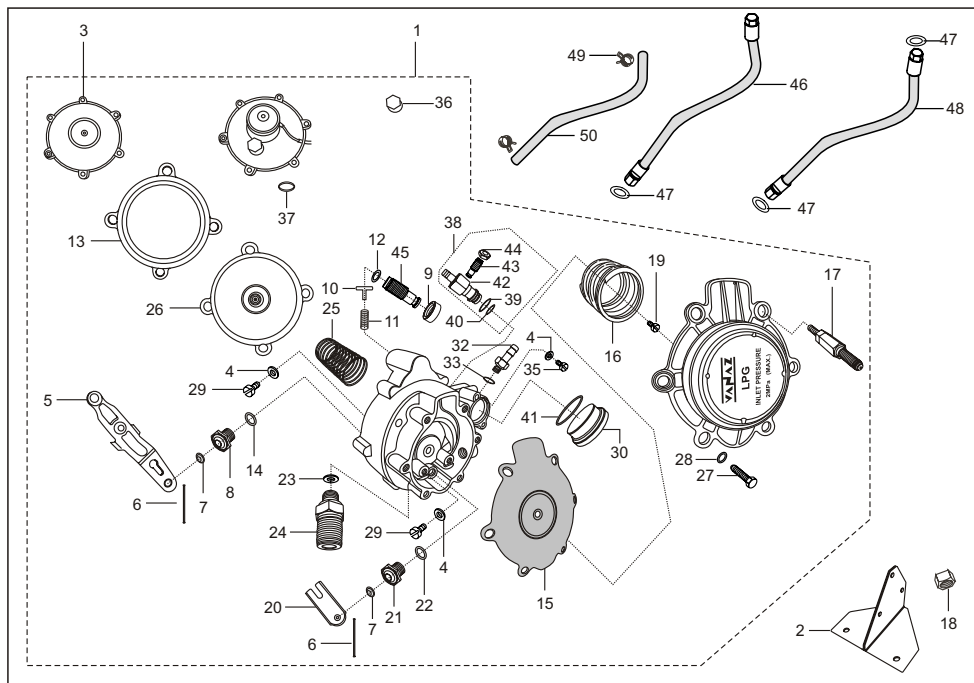
No.	Part No.	Description	Qty/Veh.			Remarks
			24	AG	AS	
18	AF 1210 38	Lock nut	--	--	1	
19	AF 1210 44	Mounting plate	--	--	1	
20	AF 1210 45	Philips screw	--	--	2	
21	AF 2010 10	Micro switch	--	--	1	
22	AF 1210 46	Philips screw	--	--	2	
23	AF 1211 04	'O' ring	--	--	1	
24	AF 1211 05	Retainer	--	--	1	
25	AF 1211 06	'O' ring	--	--	1	
26	AF 1211 07	Filter	--	--	1	
27	AF 1211 08	Washer	--	--	1	
28	AF 1210 84	Pad	--	--	1	
29	24 1214 13	First stage reduction unit	--	--	1	From 05.07.09 Improved side filling
	24 1212 37	First stage reduction unit	--	--	1	
30	AF 1210 41	Pad holder	--	--	1	
31	AF 1210 39	Relief valve spring	--	--	1	
32	AF 1210 40	Adjusting screw	--	--	1	
33	24 1214 16	Elbow	--	--	1	N. I. from 05.07.09



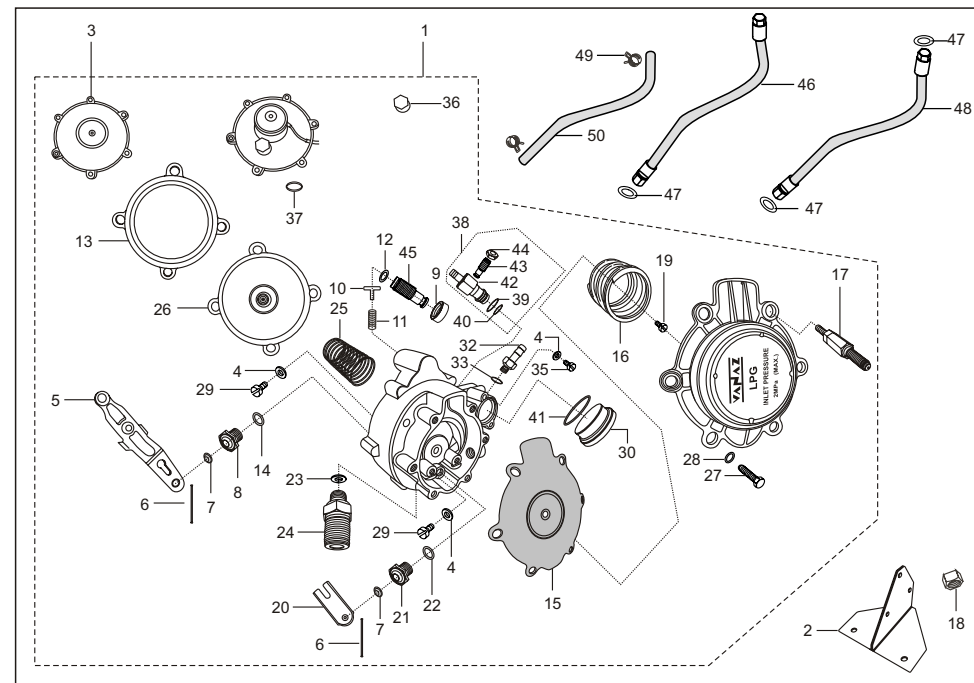
No.	Part No.	Description	Qty/Veh.			Remarks
			24	AG	AS	
1	24 1214 07	BKT. Filling valve	--	1	--	
2	24 1212 45	Filler	--	1	--	
3	59 0100 10	Screw csumk for filter	--	2	--	
4	AF 1210 57	Nut	--	2	--	
5	AF 1210 58	Washer	--	2	--	
6	AF 1210 49	Spring washer	--	2	--	
7	24 1213 37	Connector for filler	--	1	--	
8	AF 1210 85	Washer	--	1	--	
9	CX 1410 46	'O' ring	--	1	--	
10	24 1213 94	Cap	--	1	--	
11	24 1213 93	Knob	--	1	--	
12	CX 1410 44	Steel ball	--	1	--	
13	CX 1410 45	Spacer	--	1	--	



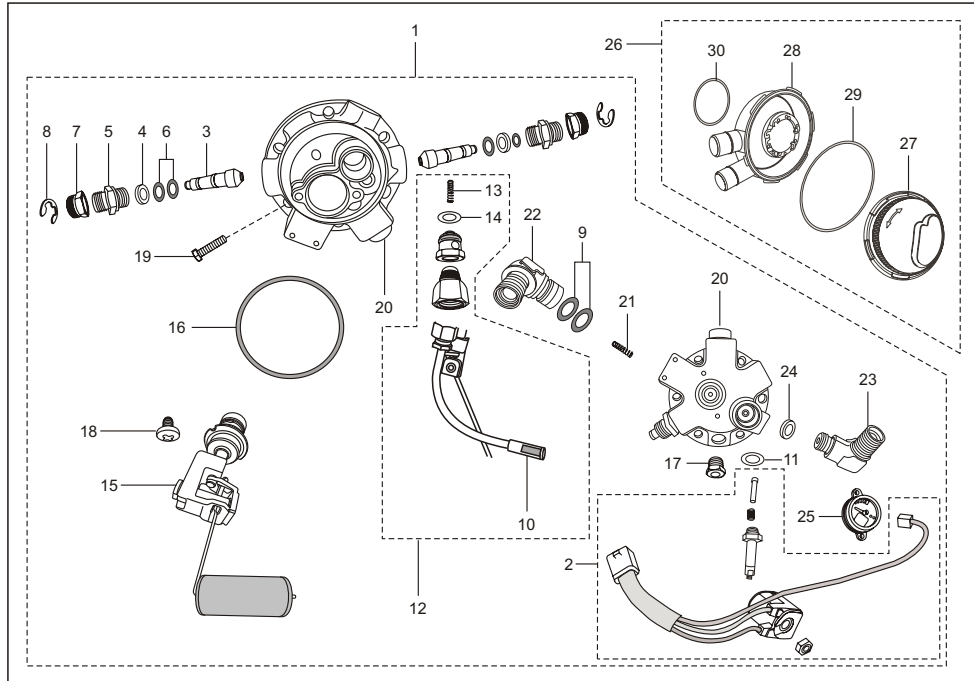
No.	Part No.	Description	Qty/Veh.			Remarks
			24	AG	AS	
1	24 1212 96	Regulator LPG	--	1	--	
2	24 1613 98	Bkt. for LPR mtg.	--	1	--	
3	24 1212 97	Diaphragm-Sub assly.	--	1	--	
4	AF 1210 58	Washer	--	15	--	
5	24 1212 98	Lever	--	1	--	
6	24 1212 99	Pin Lever	--	2	--	
7	AF 1210 62	Pad	--	1	--	
8	24 1213 00	Seat	--	1	--	
9	24 1213 02	Lock nut	--	1	--	
10	24 1213 03	Guide spring	--	1	--	
11	24 1213 04	Spring	--	1	--	
12	59 2100 17	'O' ring	--	1	--	
13	24 1213 05	Ring clamping	--	1	--	
14	24 1213 06	Rubber washer	--	1	--	
15	24 1213 07	Diaphragm	--	1	--	
16	24 1213 10	Spring	--	1	--	
17	24 1213 09	Stud mtg	--	3	--	



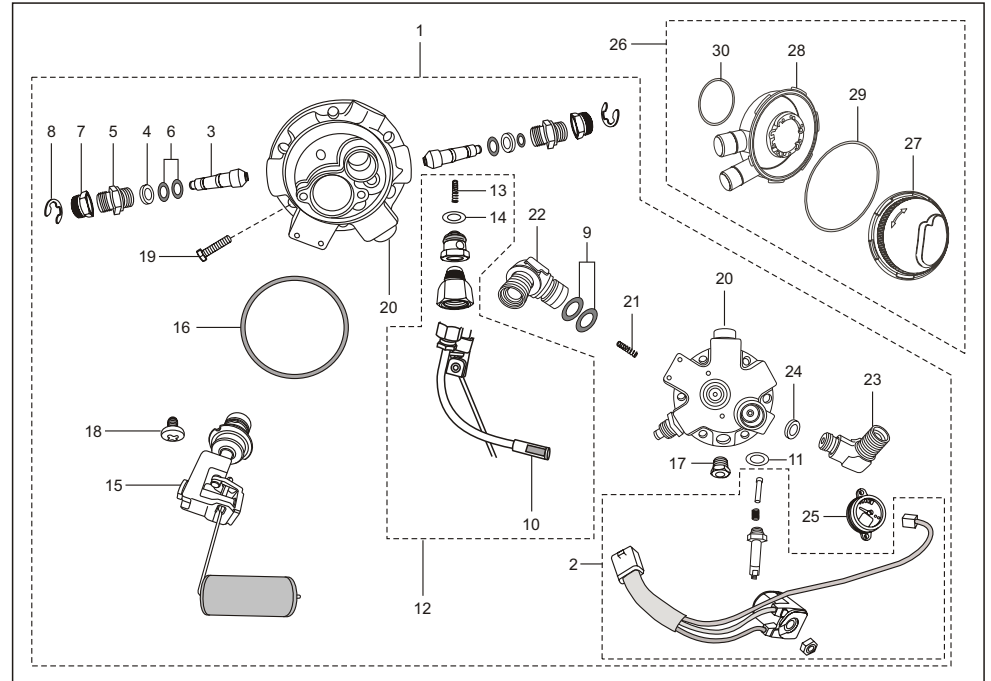
No.	Part No.	Description	Qty/Veh.			Remarks
			24	AG	AS	
18	AF 1210 57	Nut	--	3	--	For mtg. LPR on bkt.
19	24 1213 11	Spring adjusting screw	--	1	--	
20	24 1213 12	Lever sub assly	--	1	--	
21	24 1213 13	Seat	--	1	--	
22	24 1213 14	Rubber washer	--	1	--	
23	24 1213 15	Washer copper	--	1	--	
24	24 1213 16	Connector inlet	--	1	--	
25	24 1213 17	Vaccum spring	--	1	--	
26	24 1213 18	Diaphragm	--	1	--	
27	AF 1210 50	Screw	--	12	--	
28	AF 1210 49	Washer spring	--	15	--	
29	AF 1210 70	Screw	--	8	--	
30	24 1213 19	Plug	--	1	--	
31	24 1213 24	Filter disc	--	1	--	N.I.
32	24 1213 25	Nozzle	--	1	--	
33	24 1213 26	Nylon washer	--	1	--	
34	24 1213 27	Plug PR check	--	1	--	N.I.
35	AF 1210 94	Screw	--	4	--	



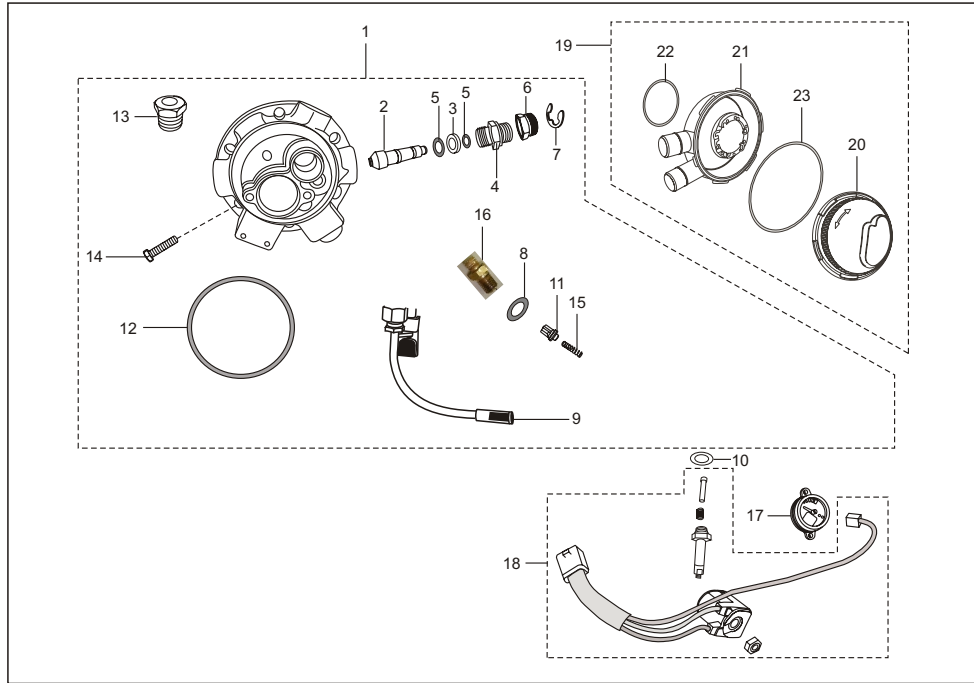
No.	Part No.	Description	Qty/Veh.			Remarks
			24	AG	AS	
36	24 1213 48	Drain plug	--	2	--	
37	AF 1211 04	'O' ring	--	1	--	
38	24 1213 29	Assly single nozzle flow cont.	--	1	--	
39	AF 1210 93	'O' ring	--	2	--	
40	AF 1210 91	'O' ring	--	1	--	
41	24 1213 21	'O' ring	--	1	--	
42	24 1213 20	Body -Flow control	--	1	--	
43	24 1213 22	Screw flow control	--	1	--	
44	24 1213 23	Lock nut	--	1	--	
45	24 1213 01	Idling screw	--	1	--	
46	24 1213 91	Assly. Flex. Hose	--	1	--	From LPG filter to regulator
47	AM 1211 05	Assly flex. hose -1	--	1	--	For Zero Deg. Multivalve
48	24 1212 44	Washer	--	1	--	
48	24 1212 58	Hose LPG	--	2	--	From regulator to inlet duct
49	24 1214 19	Assly flex. hose -2	--	1	--	For Zero Deg. Multivalve
49	24 1213 54	Clip	--	1	--	
50	24 1212 55	Hose vent	--	1	--	



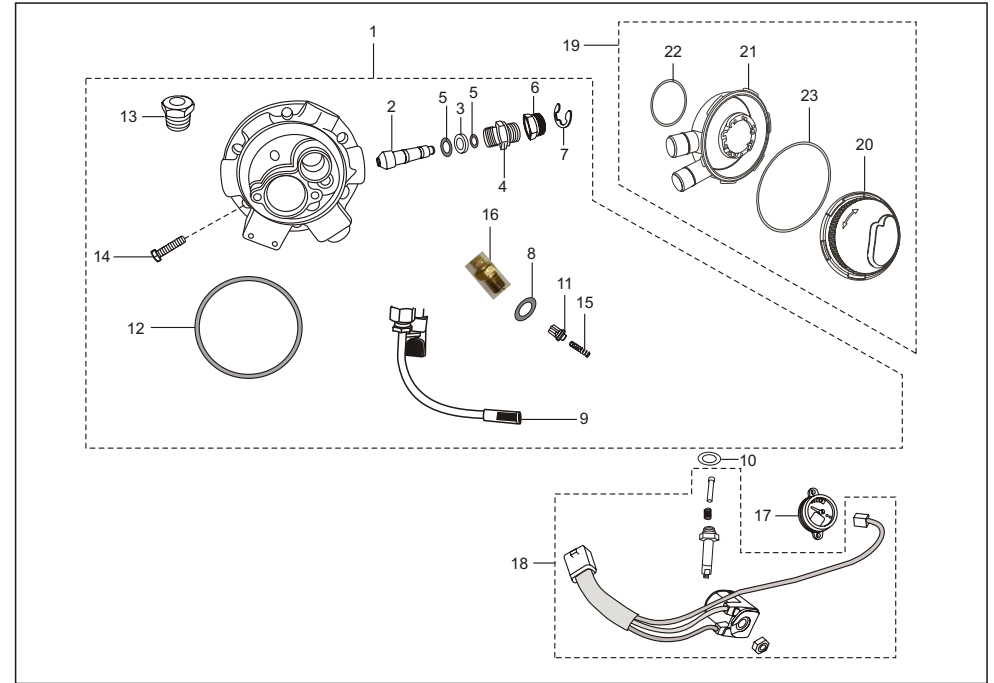
No.	Part No.	Description	Qty/Veh.			Remarks
			24	AG	AS	
1	24 1212 40	Multivalve - assly Vanaz	--	1	--	
2	24 2013 38	Solenoid Coil assly	--	1	--	With harness
3	36 2440 05	Spindle with pad	--	2	--	
4	AF 1210 69	Washer	--	2	--	
5	24 1212 66	Retainer - MV	--	2	--	
6	59 2100 13	'O' ring	--	4	--	
7	24 1212 67	Knob - MFV	--	2	--	
8	59 1700 07	Circlip - External	--	2	--	
9	59 2100 14	'O' ring - MFV	--	1	--	
10	24 1212 68	Filter	--	1	--	Part of filter kit
11	59 2100 15	'O' ring M-V Solenoid	--	1	--	
12	36 2440 03	Filter kit-MFV	--	1	--	
13	24 1212 72	Spring	--	1	--	Part of filter kit
14	59 2100 16	'O' ring	--	1	--	Part of filter kit
15	36 2440 04	Fioat - Kit - MFV	--	1	--	



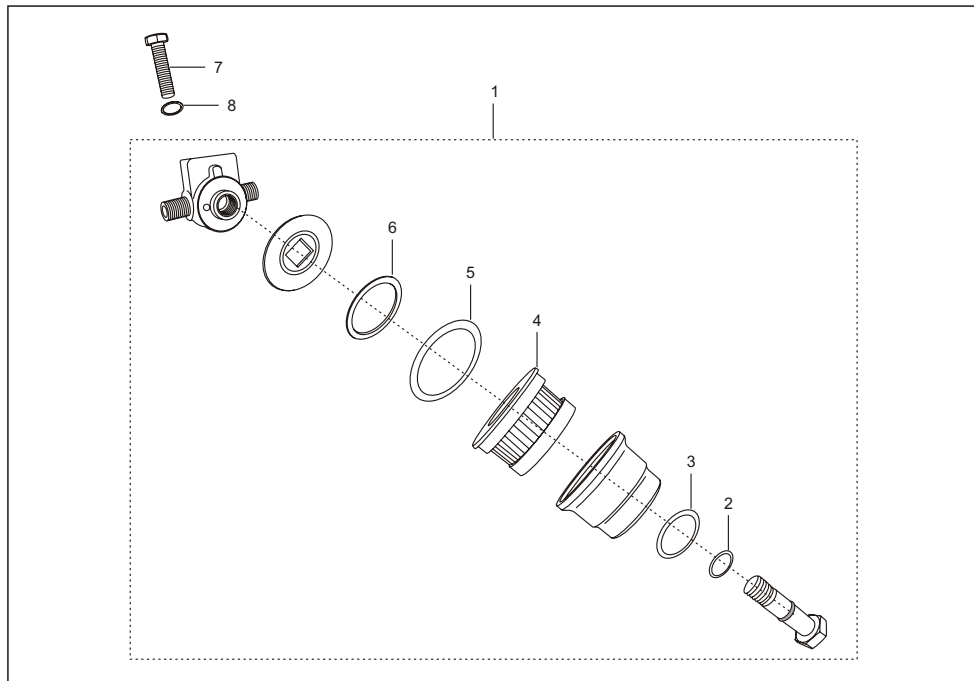
No.	Part No.	Description	Qty/Veh.			Remarks
			24	AG	AS	
16	24 1212 83	'O' Ring	--	1	--	
17	24 1212 86	Plug Fusible	--	1	--	
18	59 0100 12	Screw pan Head	--	2	--	For mtg. Float kit
19	24 1212 63	Screw	--	6	--	For mtg. Multi valve on cylinder
20	39 2440 07	P.R.V. Sub assly	--	1	--	
21	24 1212 90	Spring Conical	--	1	--	
22	24 1212 91	Elbow Swivel	--	1	--	
23	24 1212 42	Elbow	--	1	--	
24	24 1213 15	Washer Copper	--	1	--	
25	24 2013 37	Gauge Content	--	1	--	
26	24 1212 48	Assly seal box	--	1	--	
27	24 1212 49	Case upper	--	1	--	
28	24 1212 31	Lower Case	--	1	--	
29	59 2100 12	'O' ring bottom	--	1	--	
30	24 1212 50	'O' ring upper	--	1	--	



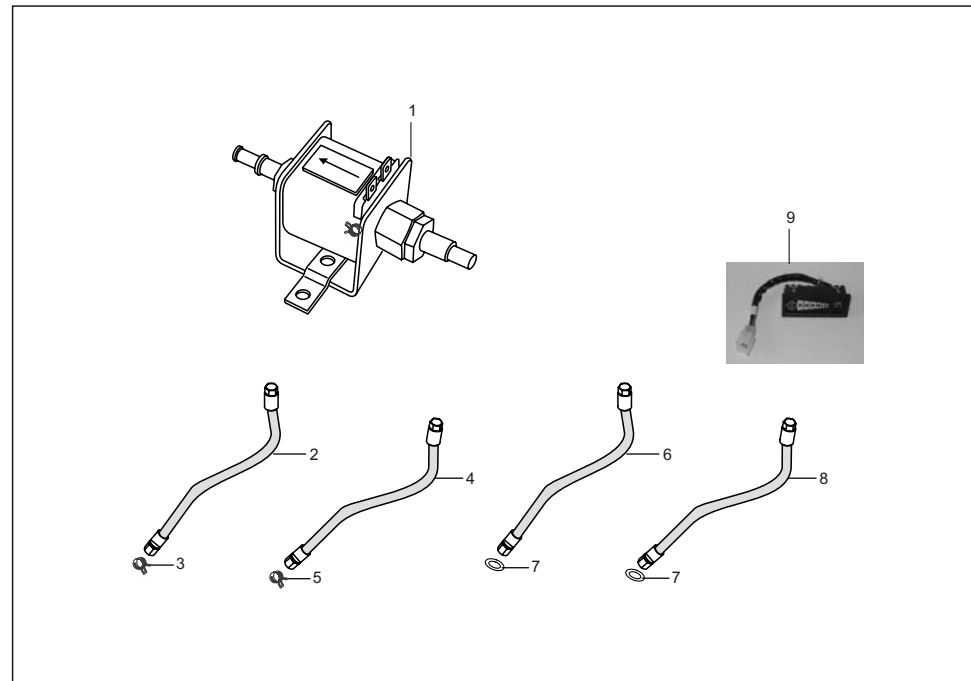
No.	Part No.	Description	Qty/Veh.			Remarks
			24	AG	AS	
1	AU 1720 02	Multi valve - Assly vanaz		1		
2	36 2440 05	Spindle with pad		1		
3	AF 1210 69	Washer		1		
4	24 1212 66	Retainer - MV		1		
5	59 2100 13	'O' Ring		2		
6	24 1212 67	Knob - MFV		1		
7	59 1700 07	Criclip- External		1		
8	AU 1720 65	'O' Ring - MFV		1		
9	24 1212 68	Filter		1		
10	59 2100 15	'O' ring M-V Solenoid		1		
11	36 2440 04	NRV sub assly		1		
12	24 1212 83	'O' Ring		1		
13	AU 1720 52	Plug fusible		1		
14	AU 1720 74	Allen Screw	6			For mtg. Multivalve on cylinder
15	24 1212 90	Spring Conical		1		



No.	Part No.	Description	Qty/Veh.			Remarks
			24	AG	AS	
16	AU 1720 66	Inlet connector		1		
17	AU 4026 01	Gauge content		1		With harness
18	AU 4030 01	Solenoid coil assly		1		
19	AU 1720 28	Assly seal box		1		
20	24 1212 49	Case upper		1		
21	AU 1720 34	Lower case		1		
22	59 2100 12	'O' ring bottom		1		
23	24 1212 50	'O' ring upper		1		



No.	Part No.	Description	Qty/Veh.			Remarks
			24	AG	AS	
1	24 1213 97	Filter LPG	--	1	--	
2	24 1213 98	'O' ring	--	1	--	
3	24 1213 99	'O' ring	--	1	--	
4	24 1214 00	Filter element	--	1	--	
5	24 1214 01	'O' ring	--	1	--	
6	24 1214 02	'O' ring	--	1	--	
7	AF 1211 14	Screw	--	2	--	
8	AF 1211 16	Washer	--	2	--	



No.	Part No.	Description	Qty/Veh.			Remarks
			24	AG	AS	
1	AF 2010 23	Solenoid (peteol)	--	1	--	
2	24 1213 32	Assly. Vaccum hose	--	1	--	Regulator to air intake duct
3	24 1213 33	Clip for hose vaccum	--	1	--	
4	24 1212 51	Assly. Gas vent hose	--	1	--	LPG Filter to seal box
5	24 1212 53	Clip	--	1	--	
6	24 1212 43	Hose flex. 1	--	1	--	Filler connector to multivalve
	AM 1211 05	Assly flex. Hose -1	--	1	--	Filler connector to multivalve For Zero Deg. Multivalve
7	24 1212 44	Washer	--	2	--	
8	24 1212 54	Hose flex. 2	--	1	--	Multivalve to LPG filter
	24 1214 19	Assly flex. Hose -2	--	1	--	Multivalve to LPG filter For Zero Deg. Multivalve
9	24 2013 35	Assly. Light indicator	--	1	--	

Kit List

RE 2 STROKE AUTORIKSHA

Sr. No.	Kit Part No.	Kit Description	Part No.	Description	Qty./Kit
1	AB151092	Major Kit (Front Wheel Cylinder)	AB151097	Piston	2
			AB151099	Wheel Cylinder seal	2
			AB151098	Spring	2
			AB151078	Wheel Cylinder boot	2
			AB151100	Bleed Cap	1
			AB151079	Bleed Screw	1
	AB151093	Minor Kit (Front Wheel Cylinder)	AB151099	Wheel Cylinder seal	2
			AB151098	Spring	1
			AB151078	Wheel Cylinder boot	5
			AB151101	Piston	2
2	AB151094	Major Kit (Rear Wheel Cylinder)	AB151102	Wheel Cylinder Seal	2
			AB151098	Spring	1
			AB151078	Wheel Cylinder boot	2
			AB151079	Bleeder Screw	1
			AB151102	Wheel Cylinder Seal	2
			AB151098	Spring	1
	AB151095	Minor Kit (Rear Wheel Cylinder)	AB151078	Wheel Cylinder boot	2
			22150441	Packing	2
			22151014	Packing Wheel Cylinder	2
4	36152202	Master Cylinder Kit	21150404	Inner Valve packing	1
			21150405	Outer Valve packing	1
			21150408	Packing	1
			21150457	Oil Seal	1
5	36172203	Liner Set	22150239	Liner	4
			39018209	Rivet - Flat Head	32
6	36172201	Front Wheel Bearing Kit	01100342	Ball Bearing	1
			01101009	Bearing	1
			22170115	Oil Seal	1
			22170117	Spacer	1
7	36241002	Roller Bracket Set	06101111	Screw For Bracket	1
			06101112	Spring	1
			24101111	Bracket Assembly With Roller	1
8	36241702	Trunion Mounting Kit	24170205	Front Suspension kit	1
			24170206	Upper plate assembly	1
			24170208	Lower plate Spring Washer	1
			39026512	Spring Washer	1
			39069415	Hex Nut	1
9	36241010	Oil Seal Kit	01100355	Oil Seal magneto side	1
			24100314	Oil Seal	1
			24101031	Oil seal clutch side	1
			24131004	Oil seal	2
10	36241306	RE bevel / Satellite gear kit	22131018	Satellite gear	2
			24131009	Bevel gear	2
11	36241703	Slider Block / Pin Kit	24170425	Pin For properler shaft	4
			24171068	Slider Block	8
12	AE121048	Kit For Spaco Carb.	24120506	Bellow	1
			05191046	Screw Terminal Assembly	1
			24191087	Acc cable Comp. Spaco	1
13	AE121050	Kit UCAL Carb.	24121049	Bellow for UCAL	1
			24121052	Clip	1
			24191071	Acc.Cont.cable complete	0

Kit List

RE 2 STROKE AUTORIKSHA

Sr. No.	Kit Part No.	Kit Description	Part No.	Description	Qty./Kit
14	AB151074	Minor Kit for TMC	AB151127	Primary Cup	2
			AB151128	Pressure Cup	2
			AB151068	Gasket 'O' ring	1
			AB151088	Boot	1
			AB151089	Boot ring	1
15	AB151073	Major Kit For TMC	AB151065	Primary piston complete	1
			AB151066	Secondary piston Complete	1
			AB151068	Gasket 'O' ring	1
			AB151067	Secondary piston stoper	1
			39236017	Piston Stoper Crclip	1
			AB151088	Boot	1
			AB151089	Boot ring	1
16	36AB4001	Hub pin Kit	AB171020	Bush Needle	1
			AB171021	Pin Pivot front	1

Part Index

RE 2 STROKE
AUTORIKSHA

Part No.	Figure No.	Page No.
01 1003 14	8	1
01 1003 15	12	1
01 1003 16	13	1
01 1003 17	14	1
01 1003 23	6	60
01 1003 41	21	2
01 1003 42	4	69
01 1003 42	9	61
01 1006 11	4	4
01 1006 12	5	4
01 1006 13	6	4
01 1006 14	8	4
01 1006 15	9	4
01 1007 11	10	10
01 1007 12	10	10
01 1007 13	10	10
01 1007 14	10	10
01 1008 18	7	5
01 1008 21	3	6
01 1008 23	6	5
01 1009 05	6	6
01 1009 05	15	42
01 1009 11	11	7
01 1010 08	8	11
01 1010 08	10	76
01 1010 09	5	69
01 1012 05	26	15
01 1012 06	27	15
01 1013 06	9	21
01 1106 09	24	106
01 1201 20	24	24
01 1401 16	7	101
01 1401 17	4	120
01 1402 13	8	44
01 1402 20	11	44
01 1402 29	14	44
01 1501 09	5	77

Part No.	Figure No.	Page No.
01 1501 12	2	77
01 1502 09	13	77
01 1601 26	15	102
01 1605 09	4	50
01 1605 09	9	71
01 1607 17	17	102
01 1701 19	11	67
01 1701 19	11	69
01 1701 22	7	76
01 1701 30	15	64
01 1702 51	8	73
01 1702 54	4	73
01 1702 55	1	73
01 1801 24	8	64
01 1801 25	7	64
01 1801 28	4	64
01 1801 29	3	64
01 1801 30	2	64
01 1901 07	3	86
01 1901 08	4	86
01 1902 05	9	88
01 1902 05	20	87
01 1902 34	2	99
01 1902 34	3	54
01 1902 34	12	98
01 2002 13	8	110
03 1003 35	3	1
03 1003 38	19A	2
03 1007 18	10	69
03 1501 11	3	77
03 1701 09	2	69
03 1701 09	5	43
03 1701 09	18	68
03 1701 21	17	70
03 1701 27	4	11
03 1701 29	18	70
03 1801 11	18	65

Part Index

RE 2 STROKE
AUTORIKSHA

Part No.	Figure No.	Page No.
03 1801 14	12	64
03 1801 16	15	14
03 1801 16	17	65
03 1801 18	14	64
03 1801 23	13	64
03 1902 04	11	88
03 1902 04	22	87
03 1902 06	10	88
03 1902 06	21	87
03 1902 28	1	99
05 1010 18	19	2
05 1010 51	13	42
05 1010 56	5	60
05 1010 72	2	6
05 1010 83	1	77
05 1010 83	16	87
05 1010 83	20	70
05 1211 57	12	8
05 1510 12	14	7
05 1510 12	19	59
05 1710 08	3	73
05 1710 12	7	73
05 1903 01	4	122
05 2202 06	1	124
06 10 1112	8	12
06 1007 02	5	9
06 1007 06	9	9
06 1010 04	13	11
06 1010 07	16	11
06 1010 09	5	11
06 1010 56	2	9
06 1011 11	7	12
06 1011 48	9	3
06 1011 96	4	3
06 1012 13	1	6
06 1111 01	3	16
06 1112 79	11	17

Part No.	Figure No.	Page No.
06 1113 16	2	16
06 1113 38	3	19
06 1113 50	3	19
06 1607 12	13	50
06 1607 13	14	50
06 1803 03	13	66
06 1803 03	20	65
06 1902 26	5	122
06 1910 89	6	88
06 1910 89	12	86
06 2010 82	3	115
06 2010 82	7	123
06 2010 83	2	115
06 2010 83	4	116
06 2012 04	4	110
06 2012 64	12	110
06 2012 84	6	117
06 2013 25	7	117
06 2013 34	2	110
06 2013 96	5	110
06 2210 28	24	102
07 1810 04	10	64
07 1810 06	11	64
07 1810 07	5	64
07 1810 09	9	64
08 1110 18	10	17
15 1011 22	12	22
15 1011 71	13	10
15 1410 13	14	72
15 1810 32	14	66
15 1810 32	21	65
15 1810 33	15	66
15 1810 33	22	65
15 1810 34	16	66
15 1810 34	23	65
16 1111 25	11	20
16 1210 81	32	24

Part Index

RE 2 STROKE
AUTORIKSHA

Part No.	Figure No.	Page No.
16 1211 38	3	31
18 1210 16	28	24
19 1010 03	8	3
19 1010 14	9	9
19 1010 16	10	9
19 1010 17	10	9
19 1010 18	10	9
19 1010 19	10	9
19 1010 20	10	9
19 1210 20	5	23
19 1210 33	14	23
19 1210 34	15	23
19 1210 36	17	24
19 1210 39	14	28
19 1210 39	33	24
19 1210 40	15	28
19 1210 40	21	24
19 1210 42	23	24
19 1210 44	29	24
19 1210 48	9	23
19 1210 50	30	24
19 1611 51	21	53
20 2010 02	6	110
20 2010 17	12	120
21 1003 24	12	10
21 1007 11	11	10
21 1009 08	16	7
21 1014 27	17	15
21 1014 29	14	14
21 1301 10	1	40
21 1502 20	2	89
21 1503 06	4	57
21 1503 07	3	57
21 1504 04	3	92
21 1504 05	4	92
21 1504 06	5	92
21 1504 08	10	92

Part No.	Figure No.	Page No.
21 1504 16	15	92
21 1504 20	3	58
21 1504 20	17	92
21 1504 21	5	89
21 1504 22	2	95
21 1504 22	3	91
21 1504 22	6	89
21 1504 22	10	95
21 1504 23	7	89
21 1504 24	8	89
21 1604 17	12	49
21 1701 08	11	76
21 1704 16	4	124
21 1801 07	6	64
21 1801 08	16	65
21 1802 07	5	83
21 1802 07	5	84
21 1803 07	14	83
21 1803 07	14	84
21 1803 08	16	83
21 1803 08	16	85
21 1902 12	3	97
21 1910 72	13	86
22 2301 40	9	101
22 1010 03	4	22
22 1010 10	6	3
22 1011 15	2	14
22 1014 23	19	15
22 1110 74	18	18
22 1110 75	19	18
22 1204 35	14	33
22 1205 30	25	24
22 1210 09	15	34
22 1301 47	3	5
22 1310 14	11	40
22 1310 18	10	40
22 1502 35	2	79

Part Index

RE 2 STROKE
AUTORIKSHA

Part No.	Figure No.	Page No.
22 1502 35	9	62
22 1502 39	3	79
22 1502 39	10	62
22 1502 40	5	79
22 1502 40	12	62
22 1502 41	6	79
22 1502 41	13	62
22 1502 42	7	54
22 1502 42	7	79
22 1502 42	14	62
22 1502 43	8	79
22 1502 43	15	62
22 1502 44	16	63
22 1504 35	15	86
22 1504 35	15	95
22 1504 55	6	92
22 1504 56	7	92
22 1504 57	8	92
22 1504 59	9	92
22 1505 02	1	58
22 1505 13	2	54
22 1505 13	10	100
22 1505 15	7	58
22 1505 20	13	59
22 1505 22	18	59
22 1505 24	2	58
22 1505 25	16	59
22 1510 36	10	77
22 1510 40	11	77
22 1510 44	1	57
22 1510 45	7	57
22 1510 47	5	57
22 1510 48	6	57
22 1510 55	2	92
22 1510 60	20	92
22 1510 63	14	59
22 1510 64	15	59

Part No.	Figure No.	Page No.
22 1510 70	14	92
22 1510 71	1	89
22 1510 81	7	62
22 1510 86	8	62
22 1510 96	1	92
22 1510 97	13	92
22 1511 06	1	74
22 1511 06	12	77
22 16 1051	12	71
22 1602 35	3	52
22 1608 05	2	50
22 1610 62	2	97
22 1611 28	2	120
22 1611 31	3	120
22 1611 93	3	50
22 1611 95	10	52
22 1612 08	13	95
22 1612 21	8	103
22 1612 38	24	104
22 1701 15	6	67
22 1701 15	7	69
22 1701 17	7	67
22 1701 17	8	69
22 1701 18	12	67
22 1701 18	12	69
22 1701 19	13	69
22 1704 34	3	62
22 1704 38	7	60
22 1710 49	4	76
22 1710 07	8	61
22 1710 46	1	69
22 1710 51	5	73
22 1710 80	16	41
22 1710 80	17	63
22 1802 19	2	83
22 1802 19	2	84
22 1810 25	1	84

Part Index

RE 2 STROKE
AUTORIKSHA

Part No.	Figure No.	Page No.
22 1901 12	11	86
22 1910 97	6	122
22 1910 48	4	99
22 1910 69	10	86
22 1910 88	1	97
22 1910 92	5	86
22 1910 96	5	122
22 2001 61	12	53
22 2004 12	3A	116
22 2004 17	8	116
22 2005 21	4	115
22 2008 32	6	35
22 2008 32	18	34
22 2010 86	11	71
22 2010 87	10	71
22 2210 16	1	124
22 2306 35	11	103
22 2306 56	6	103
22 2311 40	4	103
22 2311 41	3	103
22 2311 42	5	103
22 2311 55	10	105
22 2312 50	1	103
22 2312 58	2	103
22 2312 80	7	103
22 2501 03	4	123
22 2501 18	6	123
22 2501 32	3	123
22 2510 01	1	123
23 1613 05	9	43
23 1613 05	9	76
23 1613 05	11	79
23 1613 05	14	12
23 1613 05	23	15
23 1707 04	10	3
24 2012 37	14	113
24 2012 60	13	111

Part No.	Figure No.	Page No.
24 2012 61	14	113
24 2012 77	13	20
24 2301 98	13	102
24 2312 45	14	102
24 2312 55	1	101
24 1003 05	3	42
24 1003 05	16	2
24 1003 08	23	2
24 1003 11	26	2
24 1003 14	25	2
24 1007 03	6	9
24 1007 04	7	9
24 1007 05	8	9
24 1008 08	2	6
24 1008 09	3	6
24 1009 08	16	7
24 1010 05	6	11
24 1010 06	3	11
24 1010 10	10	11
24 1010 18	10	12
24 1010 49	6	9
24 1010 50	1	12
24 1010 55	12	11
24 1010 56	7	11
24 1010 64	9	6
24 1010 67	5	6
24 1010 69	8	6
24 1010 69	13	42
24 1010 82	14	11
24 1010 87	18	15
24 1010 96	7	6
24 1011 00	1	9
24 1011 09	6	12
24 1011 11	5	12
24 1011 77	1	14
24 1011 94	12	7
24 1012 01	28	15

Part Index

RE 2 STROKE
AUTORIKSHA

Part No.	Figure No.	Page No.
24 1012 03	24	15
24 1014 09	16	15
24 1014 14	3	14
24 1014 16	13	14
24 1014 17	12	14
24 1014 18	21	15
24 1014 19	20	15
24 1014 21	22	15
24 1014 22	10	14
24 1015 47	1	4
24 1015 49	2	1
24 1015 52	18	2
24 1015 59	11	11
24 1015 65	1	1
24 1015 70	8	5
24 1015 71	1	5
24 1015 72	7	14
24 1015 79	1	1
24 1015 80	1	22
24 1015 81	2	22
24 1015 82	3	22
24 1108 08	13	8
24 1108 17	15	8
24 1110 42	8	19
24 1110 80	9	19
24 1110 85	8	17
24 1110 86	9	17
24 1110 87	18	18
24 1110 88	19	18
24 1110 91	1	19
24 1110 95	1	16
24 1110 97	2	16
24 1110 98	8	17
24 1110 99	10	17
24 1111 00	18	18
24 1111 07	1	21
24 1111 09	9	19

Part No.	Figure No.	Page No.
24 1111 10	1	19
24 1111 12	8	17
24 1111 16	1	16
24 1111 17	2	16
24 1111 19	12	20
24 1111 20	12	20
24 1111 21	1	19
24 1111 23	1	16
24 1111 24	8	17
24 1111 28	12	20
24 1204 02	13	33
24 1205 06	20	34
24 1210 02	2	33
24 1210 49	2	25
24 1210 49	14	36
24 1210 49	20	34
24 1210 52	4	25
24 1210 52	16	34
24 1210 53	5	25
24 1210 54	6	25
24 1210 59	11	25
24 1210 61	13	25
24 1210 62	14	25
24 1210 62	24	32
24 1210 63	15	25
24 1210 64	16	26
24 1210 65	17	26
24 1210 65	19	32
24 1210 66	18	26
24 1210 67	19	26
24 1210 68	20	26
24 1210 69	2	31
24 1210 69	21	26
24 1210 70	8	25
24 1210 71	22	26
24 1210 72	23	26
24 1210 73	24	26

Part Index

RE 2 STROKE
AUTORIKSHA

Part No.	Figure No.	Page No.
24 1210 76	27	26
24 1210 77	28	26
24 1210 78	29	26
24 1210 79	30	26
24 1210 80	31	27
24 1210 84	35	27
24 1210 86	26	32
24 1210 86	36	27
24 1210 87	9	25
24 1210 88	7	25
24 1211 05	1	35
24 1211 07	2	35
24 1211 09	15	36
24 1211 10	3	35
24 1211 12	13	36
24 1211 17	7	35
24 1211 18	1	25
24 1211 20	8	35
24 1211 25	4	35
24 1211 27	26	26
24 1211 28	25	26
24 1211 29	32	27
24 1211 30	33	27
24 1211 31	34	27
24 1211 32	10	25
24 1211 35	12	25
24 1211 40	1	39
24 1211 43	10	37
24 1211 44	1	37
24 1211 45	3	37
24 1211 47	17	139
24 1211 48	18	139
24 1211 49	15	129
24 1211 49	16	137
24 1211 50	15	138
24 1211 51	16	139
24 1211 52	13	136

Part No.	Figure No.	Page No.
24 1211 55	11	37
24 1211 56	17	131
24 1211 57	15	131
24 1211 59	18	132
24 1211 61	1	127
24 1211 63	1	132
24 1211 64	2	132
24 1211 65	16	132
24 1211 67	17	133
24 1211 68	16	133
24 1211 74	9	37
24 1211 77	1	134
24 1211 79	17	132
24 1211 81	18	128
24 1211 81	18	135
24 1211 82	16	8
24 1211 83	A	28
24 1211 84	6	138
24 1211 90	22	128
24 1211 90	24	135
24 1211 96	13	28
24 1212 07	1	39
24 1212 15	19	29
24 1212 21	1	140
24 1212 22	3	140
24 1212 24	12	38
24 1212 27	1	39
24 1212 31	28	153
24 1212 32	1	31
24 1212 37	29	147
24 1212 38	5	140
24 1212 40	1	152
24 1212 42	23	153
24 1212 43	6	155
24 1212 44	47	151
24 1212 44	7	155
24 1212 45	2	148

Part Index

RE 2 STROKE
AUTORIKSHA

Part No.	Figure No.	Page No.
24 1212 45	13	38
24 1212 48	26	153
24 1212 49	27	153
24 1212 50	30	153
24 1212 51	4	155
24 1212 53	5	155
24 1212 54	8	155
24 1212 55	50	151
24 1212 58	48	151
24 1212 63	19	153
24 1212 66	5	152
24 1212 67	7	152
24 1212 68	10	152
24 1212 72	13	152
24 1212 83	16	153
24 1212 86	17	153
24 1212 90	21	153
24 1212 91	22	153
24 1212 96	1	149
24 1212 97	3	149
24 1212 98	5	149
24 1212 99	6	149
24 1213 00	8	149
24 1213 01	45	151
24 1213 02	9	149
24 1213 03	10	149
24 1213 04	11	149
24 1213 05	13	149
24 1213 06	14	149
24 1213 07	15	149
24 1213 09	17	149
24 1213 10	16	149
24 1213 11	19	150
24 1213 12	20	150
24 1213 13	21	150
24 1213 14	22	150
24 1213 15	23	150

Part No.	Figure No.	Page No.
24 1213 15	24	153
24 1213 16	24	150
24 1213 17	25	150
24 1213 18	26	150
24 1213 19	30	150
24 1213 20	42	151
24 1213 21	41	151
24 1213 22	9	144
24 1213 22	43	151
24 1213 23	10	144
24 1213 23	44	151
24 1213 24	31	150
24 1213 25	32	150
24 1213 26	33	150
24 1213 27	34	150
24 1213 29	38	151
24 1213 30	2	140
24 1213 32	2	155
24 1213 33	3	155
24 1213 35	1	8
24 1213 36	7	8
24 1213 37	7	148
24 1213 39	1	31
24 1213 48	36	151
24 1213 49	16	8
24 1213 50	1	142
24 1213 51	11	144
24 1213 54	4	140
24 1213 54	49	151
24 1213 57	15	38
24 1213 60	4	31
24 1213 61	5	31
24 1213 62	7	31
24 1213 64	9	31
24 1213 65	10	31
24 1213 66	23	32
24 1213 67	11	31

Part Index

RE 2 STROKE
AUTORIKSHA

Part No.	Figure No.	Page No.
24 1213 68	12	31
24 1213 69	14	31
24 1213 70	15	31
24 1213 71	17	32
24 1213 72	29	32
24 1213 75	20	32
24 1213 78	21	32
24 1213 83	25	32
24 1213 85	15	38
24 1213 91	46	151
24 1213 93	11	148
24 1213 94	10	148
24 1213 97	1	154
24 1213 98	2	154
24 1213 99	3	154
24 1214 00	4	154
24 1214 01	5	154
24 1214 02	6	154
24 1214 03	13	38
24 1214 04	28	32
24 1214 07	1	148
24 1214 31	1	38
24 1301 02	1	42
24 1301 03	2	42
24 1301 05	3	40
24 1301 06	5	40
24 1301 11	9	40
24 1301 13	13	40
24 1301 18	20	41
24 1301 29	12	42
24 1302 09	7	43
24 1302 14	8	43
24 1310 01	6	43
24 1310 04	19	41
24 1310 08	4	43
24 1310 09	14	40
24 1310 16	7	40

Part No.	Figure No.	Page No.
24 1310 17	8	40
24 1310 32	12	40
24 1310 46	14	42
24 1310 52	1	42
24 1401 02	1	44
24 1401 11	6	44
24 1401 12	9	44
24 1401 15	10	44
24 1410 55	13	44
24 1410 66	12	44
24 1410 67	7	44
24 1410 69	15	45
24 1410 70	13	45
24 1410 90	1	45
24 1410 91	16	46
24 1410 94	1	47
24 1410 96	5	47
24 1410 97	4	45
24 1410 98	3	45
24 1410 99	12	47
24 1410 99	16	48
24 1411 00	9	47
24 1411 01	1	125
24 1411 04	5	45
24 1411 05	7	45
24 1411 09	8	45
24 1411 09	13	47
24 1411 15	9	45
24 1411 15	23	48
24 1411 20	17	48
24 1411 21	18	48
24 1411 22	19	48
24 1504 06	14	95
24 1505 01	8	100
24 1505 02	9	100
24 1505 04	8	58
24 1505 05	9	58

Part Index

RE 2 STROKE
AUTORIKSHA

Part No.	Figure No.	Page No.
24 1505 06	11	59
24 1505 07	12	59
24 1505 08	10	58
24 1510 58	8	100
24 1510 59	8	100
24 1510 67	14	81
24 1510 68	15	81
24 1510 69	16	81
24 1510 79	18	94
24 1510 87	2	93
24 1510 90	4	93
24 1510 93	8	93
24 1510 94	3	93
24 1510 95	13	94
24 1510 97	9	93
24 1510 98	10	93
24 1510 99	1	82
24 1511 01	1	96
24 1511 07	2	82
24 1511 08	3	82
24 1511 10	2	57
24 1511 13	2A	96
24 1511 14	2B	96
24 1511 18	1	80
24 1511 19	1	80
24 1511 20	1	80
24 1511 29	5	80
24 1511 30	4	80
24 1511 31	6	80
24 1511 32	7	80
24 1511 33	8	80
24 1511 34	9	80
24 1511 35	10	80
24 1511 36	3	80
24 1511 37	11	80
24 1511 38	12	80
24 1511 39	13	81

Part No.	Figure No.	Page No.
24 1511 44	5	80
24 1511 45	9	58
24 1511 46	10	58
24 1511 47	4	58
24 1511 48	20	59
24 1511 51	5	80
24 1511 52	7	80
24 1511 54	8	58
24 1511 55	1	93
24 1511 67	2	80
24 1511 68	22	81
24 1511 69	17	81
24 1511 70	18	81
24 1511 71	19	81
24 1511 72	20	81
24 1511 73	21	81
24 1511 74	2	80
24 1511 75	22	81
24 1511 76	17	81
24 1511 78	2	80
24 1511 79	22	81
24 1511 80	17	81
24 1511 81	18	81
24 1511 82	21	81
24 16 1003	14	49
24 16 1176	16	71
24 1609 13	5	49
24 1609 16	2	12
24 1609 24	11	49
24 1611 49	4	52
24 1611 90	5	44
24 1612 44	1	52
24 1612 60	2	19
24 1612 67	3	12
24 1612 70	1	52
24 1612 80	1	52
24 1612 97	2	45

Part Index

RE 2 STROKE
AUTORIKSHA

Part No.	Figure No.	Page No.
24 1612 97	2	47
24 1613 12	17	53
24 1613 13	17	53
24 1613 19	29	15
24 1613 20	17	13
24 1613 24	17	46
24 1613 24	22	48
24 1613 26	1	52
24 1613 32	7	49
24 1613 51	2	125
24 1613 52	30	15
24 1613 56	6	52
24 1613 63	6	50
24 1613 90	17	53
24 1613 98	2	149
24 1614 00	1	52
24 1614 07	1	52
24 1614 09	12	50
24 1614 10	2	107
24 1614 14	5	52
24 1702 05	3	76
24 1702 06	2	76
24 1702 08	6	76
24 1704 25	7	55
24 1705 05	8	56
24 1705 07	4	56
24 1710 06	6	55
24 1710 07	19	63
24 1710 14	2	55
24 1710 24	11	61
24 1710 49	2	56
24 1710 55	9	56
24 1710 60	3	69
24 1710 66	12	55
24 1710 68	8	55
24 1710 69	6	73
24 1710 75	20	63

Part No.	Figure No.	Page No.
24 1710 76	10	55
24 1710 79	1	62
24 1710 82	2	62
24 1710 91	15	61
24 1710 92	16	61
24 1710 94	1	56
24 1711 01	1	60
24 1711 03	2	60
24 1711 07	1	62
24 1711 18	1	62
24 1711 20	1	60
24 1711 21	2	60
24 1810 18	17	85
24 1810 26	16	53
24 1810 30	16	53
24 1810 32	12	66
24 1810 32	19	65
24 19 1019	6	54
24 1902 17	1	54
24 1902 17	5	54
24 1902 21	8	54
24 1902 24	11	54
24 1902 24	15	53
24 1902 25	12	54
24 1902 27	7	99
24 1910 26	6	99
24 1910 28	5	99
24 1910 64	9	97
24 1910 66	10	97
24 1910 67	8	97
24 1910 72	9	97
24 1910 74	6	99
24 1910 75	5	99
24 1910 76	10	97
24 1910 80	7	99
24 1910 86	8	97
24 1910 89	1	122

Part Index

RE 2 STROKE
AUTORIKSHA

Part No.	Figure No.	Page No.
24 1910 92	14	98
24 1910 93	15	98
24 1910 95	12	98
24 1910 96	1	88
24 1910 98	3	88
24 1910 99	12	88
24 1911 00	2	88
24 1911 01	4	88
24 1911 05	8	88
24 1911 08	1	122
24 1911 10	6	99
24 1911 11	5	99
24 1911 12	7	99
24 1911 13	14	98
24 1911 14	9	97
24 1911 15	8	97
24 1911 20	11	98
24 1911 25	9	97
24 1911 26	1	54
24 2011 64	4	117
24 2011 67	6	118
24 2011 68	1	120
24 2011 75	2	117
24 2011 89	5	117
24 2012 55	13	111
24 2012 63	1	117
24 2012 64	13	121
24 2012 71	14	113
24 2012 72	13	111
24 2012 73	14	113
24 2012 74	14	20
24 2012 75	15	20
24 2012 77	8	120
24 2012 78	13	111
24 2012 79	1	110
24 2012 79	14	113
24 2012 81	13	112

Part No.	Figure No.	Page No.
24 2012 82	13	121
24 2012 82	14	113
24 2012 83	13	121
24 2012 87	19	131
24 2012 87	21	48
24 2012 89	13	112
24 2012 90	14	113
24 2012 91	7	47
24 2013 03	13	121
24 2013 04	13	121
24 2013 05	5	120
24 2013 09	6	118
24 2013 22	13	112
24 2013 23	13	112
24 2013 26	13	111
24 2013 27	14	113
24 2013 28	6	118
24 2013 30	13	111
24 2013 31	13	112
24 2013 32	13	112
24 2013 33	9	146
24 2013 34	13	121
24 2013 34	13	141
24 2013 35	9	155
24 2013 37	25	153
24 2013 38	2	152
24 2013 40	13	112
24 2013 41	14	113
24 2013 42	19	119
24 2013 45	14	113
24 2013 47	14	113
24 2013 48	13	111
24 2013 55	13	111
24 2013 57	13	112
24 2013 59	13	112
24 2013 60	15	114
24 2013 61	15	114

Part Index

RE 2 STROKE
AUTORIKSHA

Part No.	Figure No.	Page No.
24 2013 63	15	114
24 2013 64	16	114
24 2013 65	16	114
24 2210 19	1	124
24 2210 22	1	124
24 2210 24	1	124
24 2210 26	1	124
24 2210 27	1	124
24 2210 28	1	124
24 2301 76	16	102
24 2301 85	9	109
24 2301 85	15	71
24 2301 86	11	109
24 2301 97	18	102
24 2303 21	19	102
24 2303 22	20	102
24 2304 01	1	105
24 2304 09	2	105
24 2304 11	3	105
24 2304 17	14	105
24 2310 90	6	109
24 2310 91	7	109
24 2311 46	6	107
24 2311 57	10	109
24 2312 82	1	101
24 2312 95	1	101
24 2313 04	9	35
24 2313 23	1	101
24 2313 36	19	106
24 2313 37	13	105
24 2313 39	13	105
24 2313 45	12	108
24 2313 47	1	101
24 2313 55	1	101
24 2313 58	13	105
24 2313 61	16	108
24 2313 64	1	101

Part No.	Figure No.	Page No.
24 2313 67	3	105
24 2313 68	1	101
24 2313 80	16	51
24 2314 13	16	108
241009 07	9	6
25 1910 54	7	122
25 2010 09	7	110
25 2310 62	1	109
25 2310 64	5	109
28 1011 74	15	7
28 1210 09	12	37
30 2010 06	5	116
30 2010 84	14	121
31 1210 80	6	31
33 1210 33	8	23
33 1410 07	10	45
33 1410 07	15	47
33 1410 08	14	47
35 1010 58	3	9
35 1010 59	2	9
35 1011 23	2	3
35 1011 70	2	5
35 1011 76	12	5
35 1012 08	4	5
35 1110 58	2	16
35 1110 63	9	17
35 1210 35	5	39
36 1522 03	21	92
36 2440 03	12	152
36 2440 04	15	152
36 2440 05	3	152
39 0096 04	3	101
39 0147 08	8	101
39 0199 11	4	101
39 0219 11	7	71
39 0291 15	12	102
39 0293 15	6	101

Part Index

RE 2 STROKE
AUTORIKSHA

Part No.	Figure No.	Page No.
39 0694 15	6	14
39 1825 12	5	101
39 1830 12	11	102
39 0001 01	2	74
39 0001 01	6	62
39 0006 01	9	110
39 0008 01	13	12
39 0012 01	7	19
39 0062 04	5	22
39 0062 04	6	33
39 0062 04	8	71
39 0062 04	10	43
39 0062 04	10	50
39 0062 04	19	70
39 0067 04	3	99
39 0067 04	4	54
39 0067 04	13	98
39 0071 04	4	83
39 0071 04	4	84
39 0071 04	8	109
39 0071 04	8	138
39 0071 04	17	71
39 0071 04	19	104
39 0074 04	9	103
39 0078 04	8	86
39 0080 04	4	105
39 0080 04	7	72
39 0080 04	14	118
39 0080 04	10	101
39 0083 04	7	83
39 0085 04	11	120
39 0085 04	13	71
39 0085 04	13	103
39 0089 04	6	42
39 0089 04	10	1
39 0096 04	2	44
39 0096 04	12	21

Part No.	Figure No.	Page No.
39 0100 04	7	107
39 0106 04	1	33
39 0106 04	17	59
39 0119 04	3	55
39 0119 04	5	76
39 0119 04	10	47
39 0119 04	18	63
39 0132 05	5	1
39 0132 05	7	1
39 0140 07	15	12
39 0146 08	4	58
39 0146 08	4	125
39 0146 08	7	77
39 0146 08	8	90
39 0146 08	9	14
39 0146 08	16	13
39 0146 08	19	92
39 0147 08	4	89
39 0147 08	5	90
39 0147 08	10	54
39 0151 08	4	77
39 0152 08	14	8
39 0156 08	15	50
39 0161 09	15	11
39 0182 09	4	79
39 0182 09	11	62
39 0192 10	6	83
39 0192 10	6	84
39 0197 11	2	71
39 0197 11	2	109
39 0197 11	3	107
39 0197 11	5	19
39 0197 11	6	16
39 0197 11	7	50
39 0197 11	9	120
39 0197 11	10	118
39 0197 11	14	17

Part Index

RE 2 STROKE
AUTORIKSHA

Part No.	Figure No.	Page No.
39 0197 11	20	104
39 0197 11	21	18
39 0198 11	3	21
39 0198 11	15	83
39 0198 11	15	84
39 0198 11	17	34
39 019811	12	72
39 0199 11	7	90
39 0199 11	8	77
39 0199 11	18	92
39 02 01 11	6	125
39 0200 11	2	49
39 0200 11	8	21
39 0200 11	15	94
39 0201 11	8	83
39 0201 11	8	84
39 0201 11	9	73
39 0201 11	14	69
39 0203 11	11	92
39 0208 11	3	89
39 0208 11	4	90
39 0211 11	5	50
39 0211 11	13	108
39 0211 11	18	71
39 0213 11	4	9
39 0213 11	21	102
39 0217 11	8	76
39 0219 11	6	86
39 0219 11	7	52
39 0230 11	3	33
39 0230 11	8	107
39 0230 11	12	109
39 0230 11	21	106
39 0230 11	22	68
39 0237 11	11	47
39 0238 11	4	44
39 0239 11	2	21

Part No.	Figure No.	Page No.
39 0242 11	11	12
39 0246 11	2	86
39 0248 11	4	97
39 0248 11	10	49
39 0251 11	9	54
39 0251 11	10	73
39 0251 11	13	49
39 0258 11	14	71
39 0258 11	14	103
39 0262 12	2	122
39 0262 12	3	71
39 0262 12	3	83
39 0262 12	3	109
39 0262 12	4	107
39 0262 12	5	16
39 0262 12	6	19
39 0262 12	7	21
39 0262 12	7	39
39 0262 12	8	50
39 0262 12	10	120
39 0262 12	11	33
39 0262 12	11	118
39 0262 12	14	86
39 0262 12	21	68
39 0262 12	21	104
39 0263 12	6	71
39 0263 12	6	97
39 0263 12	7	86
39 0263 12	8	52
39 0263 12	9	72
39 0263 12	11	50
39 0263 12	17	17
39 0263 12	18	51
39 0264 12	3	44
39 0265 12	1	76
39 0265 12	3	49
39 0265 12	4	33

Part Index

RE 2 STROKE
AUTORIKSHA

Part No.	Figure No.	Page No.
39 0265 12	9	107
39 0265 12	13	83
39 0265 12	14	78
39 0265 12	16	94
39 0266 12	5	14
39 0267 12	4	62
39 0267 12	9	83
39 0267 12	11	73
39 0267 12	15	69
39 0268 12	2	73
39 0269 12	13	61
39 0287 15	10	103
39 0289 15	7	22
39 0289 15	16	92
39 0291 15	4	71
39 0291 15	4	109
39 0291 15	5	107
39 0291 15	9	50
39 0291 15	9	105
39 0291 15	10	33
39 0291 15	16	104
39 0291 15	22	104
39 0292 15	4	72
39 0292 15	5	71
39 0292 15	6	22
39 0292 15	7	97
39 0292 15	9	33
39 0292 15	9	52
39 0292 15	11	43
39 0292 15	15	108
39 0293 15	19	34
39 0294 15	3	93
39 0294 15	9	49
39 0294 15	10	107
39 0294 15	12	76
39 0294 15	14	109
39 0295 15	1	11

Part No.	Figure No.	Page No.
39 0295 15	8	74
39 0296 15	4	49
39 0296 15	5	62
39 0296 15	6	124
39 0296 15	10	84
39 0296 15	11	14
39 0296 15	12	73
39 0296 15	14	74
39 0296 15	16	70
39 0299 15	6	77
39 0301 15	9	74
39 0302 15	5	125
39 0303 15	14	61
39 0310 15	17	94
39 0312 15	10	83
39 0312 15	11	22
39 0326 15	18	87
39 0336 17	12	92
39 0337 17	6	40
39 0340 17	5	3
39 0342 17	5	67
39 0342 17	6	69
39 0342 17	10	61
39 0342 17	24	2
39 0364 02	18	106
39 0364 02	22	102
39 0365 13	17	106
39 0371 18	16	106
39 0372 16	11	105
39 0375 11	15	118
39 0375 11	16	17
39 0389 04	8	22
39 0390 04	25	15
39 0422 15	4	74
39 0426 06	4	12
39 0428 17	2	40
39 0435 01	17	41

Part Index

RE 2 STROKE
AUTORIKSHA

Part No.	Figure No.	Page No.
39 0435 01	17	41
39 0442 05	4	1
39 0444 04	11	1
39 0447 06	10	6
39 0448 04	13	7
39 0455 06	4	42
39 0462 04	1	49
39 0467 15	3	56
39 0467 15	6	56
39 0477 12	7	4
39 0543 11	10	74
39 0630 08	22	75
39 0667 04	8	91
39 0684 05	6	1
39 0694 15	6	58
39 0694 15	6	105
39 0694 15	15	78
39 0694 15	20	68
39 0702 01	6	39
39 0702 01	7	37
39 0732 12	7	91
39 0748 01	6	37
39 0757 01	20	18
39 0758 01	13	17
39 0761 01	8	93
39 0789 12	13	74
39 0798 15	7	116
39 0798 15	9	77
39 0798 15	19	46
39 0814 11	5	35
39 0814 11	7	33
39 0814 11	19	51
39 0817 15	5	33
39 0840 01	15	17
39 0840 01	23	68
39 0852 09	15	1
39 0886 01	4	16

Part No.	Figure No.	Page No.
39 0886 01	6	21
39 0886 01	8	8
39 0956 15	8	49
39 0960 11	22	18
39 0981 15	21	75
39 1000 06	29	2
39 1054 11	11	74
39 1063 01	5	97
39 1140 04	16	78
39 1159 02	12	105
39 1165 01	25	29
39 1165 01	31	24
39 1182 15	11	55
39 1211 11	8	72
39 1224 11	8	47
39 1224 11	11	94
39 1348 01	30	102
39 1350 01	3	122
39 1350 15	13	72
39 1355 19	20	2
39 1356 19	22	2
39 1377 04	7	84
39 1379 04	7	105
39 1379 04	12	83
39 1389 04	13	94
39 1403 01	3	117
39 1426 04	4	14
39 1450 20	9	61
39 1455 04	12	74
39 1556 04	12	45
39 1582 11	12	94
39 1585 11	11	42
39 1585 11	28	2
39 1587 21	1	43
39 1606 01	19	87
39 1663 11	6	95
39 1672 04	6	8

Part Index

RE 2 STROKE
AUTORIKSHA

Part No.	Figure No.	Page No.
39 1673 04	18	46
39 1681 04	20	106
39 1698 01	9	118
39 1702 07	6	90
39 1753 15	7	95
39 1770 04	23	75
39 1773 04	11	36
39 1773 04	12	43
39 1773 04	19	53
39 1783 01	26	102
39 1823 21	20	75
39 1825 12	11	21
39 1826 12	8	33
39 1826 12	9	22
39 1827 12	5	56
39 1828 12	5	58
39 1828 12	5	105
39 1828 12	13	109
39 1828 12	19	68
39 1828 12	22	106
39 1829 12	5	124
39 1829 12	6	49
39 1829 12	9	84
39 1829 12	12	17
39 1830 12	3	84
39 1830 12	8	105
39 1830 12	12	12
39 1830 12	14	108
39 1830 12	15	103
39 1831 12	16	119
39 1844 01	9	8
39 1860 02	8	37
39 1902 04	12	33
39 1907 01	9	38
39 1940 04	14	37
39 1941 04	15	37
39 1942 04	20	51

Part No.	Figure No.	Page No.
39 1945 04	11	38
39 1993 04	3	72
39 2295 15	13	84
39 23 7423	14	53
39 2357 17	9	67
39 2362 20	4	67
39 2369 15	3	39
39 2369 15	9	1
39 2369 15	9	42
39 2373 23	11	53
39 2440 07	20	153
39 2444 17	16	68
39 2451 11	19	85
39 2466 11	2	11
39 2484 15	12	36
39 2484 15	20	53
39 2489 15	23	106
39 2508 23	13	53
39 2540 04	8	42
39 2541 04	7	42
39 2549 01	28	102
39 2550 20	3	67
39 2592 01	18	85
39 2671 04	27	2
59 1700 07	8	152
59 0100 04	8	130
59 0100 10	3	148
59 0100 12	18	153
59 0400 22	4	136
59 0400 22	11	130
59 1100 01	9	136
59 1100 01	14	131
59 2000 12	7	60
59 2000 35	7	60
59 2100 02	2	136
59 2100 02	7	130
59 2100 04	3	136

Part Index

RE 2 STROKE
AUTORIKSHA

Part No.	Figure No.	Page No.
59 2100 04	10	130
59 2100 05	7	136
59 2100 05	13	130
59 2100 11	15	133
59 2100 12	29	153
59 2100 13	6	152
59 2100 14	9	152
59 2100 15	11	152
59 2100 16	14	152
59 2100 17	12	149
AA 1013 29	8	14
AA 1013 45	3	4
AA 1110 76	10	19
AA 1210 43	13	37
AA 1210 55	4	37
AA 1210 57	5	37
AA 1210 65	2	37
AA 1310 04	13	43
AA 1310 25	2	43
AA 1310 33	8	40
AA 1510 09	1	91
AA 1510 12	1	91
AA 1510 13	1A	95
AA 1510 36	1	95
AA 1611 05	1	50
AA 1710 02	1	60
AA 1710 04	2	60
AA 1710 06	3	60
AA 1710 07	4	60
AA 1710 11	12	61
AA 1710 19	1	60
AA 1710 20	2	60
AA 1910 27	1	86
AA 1910 32	7	88
AA 1910 32	17	87
AA 1910 51	6	122
AA 2010 48	15	109

Part No.	Figure No.	Page No.
AA 2010 70	2	116
AA 2010 90	6	116
AA 2010 91	1	115
AA 2010 93	1	115
AA 2010 99	1	116
AA 2011 00	1	116
AA 2011 56	8	118
AA 2011 57	1	116
AA 2011 60	1	116
AA 2011 61	2	116
AA 2210 05	2	124
AA 2210 06	3	124
AA 2310 97	13	105
AA 2510 01	14	43
AA 2510 01	5	123
AA 2510 03	2	123
AA 2510 03	15	43
AA 2011 52	23	104
AB 1510 07	4	93
AB 1510 14	3	90
AB 1510 35	1	79
AB 1510 41	1	90
AB 1510 45	12	95
AB 1510 48	3	95
AB 1510 49	2	91
AB 1510 49	4	95
AB 1510 51	5	95
AB 1510 52	8	95
AB 1510 54	5	93
AB 1510 55	4	91
AB 1510 61	2A	96
AB 1510 62	2B	96
AB 1510 63	1	93
AB 1510 69	2	93
AB 1510 71	7	93
AB 1510 72	6	93
AB 1510 73	9	93

Part Index

RE 2 STROKE
AUTORIKSHA

Part No.	Figure No.	Page No.
AB 1510 74	10	93
AB 1510 82	17	75
AB 1510 87	11	95
AB 1510 90	1	82
AB 1510 91	1	96
AB 1510 92	2	82
AB 1510 93	3	82
AB 1510 94	2A	96
AB 1510 95	2B	96
AB 1511 04	5	93
AB 1511 05	6	93
AB 1511 26	1	90
AB 1610 40	17	51
AB 1611 59	5	72
AB 1611 73	14	94
AB 1611 74	2	52
AB 1611 82	2	72
AB 1611 83	11	72
AB 1611 84	5	91
AB 1611 85	6	91
AB 1611 86	6	72
AB 1611 88	1	72
AB 1612 12	2	52
AB 1710 03	1	67
AB 1710 04	2	67
AB 1710 13	5	74
AB 1710 14	6	74
AB 1710 15	7	74
AB 1710 16	15	74
AB 1710 17	24	75
AB 1710 20	15	67
AB 1710 21	17	68
AB 1710 22	13	67
AB 1710 23	14	67
AB 1710 29	19	75
AB 1710 30	10	79
AB 1710 32	8	67

Part No.	Figure No.	Page No.
AB 1710 33	8A	67
AB 1710 34	10	67
AB 1710 37	24	68
AB 1710 40	9	69
AB 1710 40	16	75
AB 1710 44	3	74
AB 1710 49	18	75
AB 1810 21	11	66
AB 1810 02	1	66
AB 1810 10	2	66
AB 1810 11	3	66
AB 1810 12	4	66
AB 1810 16	7	66
AB 1810 19	9	66
AB 1810 20	10	66
AB 1810 22	11	83
AB 1810 22	11	84
AB 1810 23	12	84
AB 1810 23	17	83
AB 1810 33	5	66
AB 1810 34	6	66
AB 2010 65	10	72
AB 2010 68	6	110
AB 2010 72	2	110
AB 2010 73	3	110
AB 2010 76	17	119
AB 2010 77	18	119
AB 2310 08	18	104
AB 2310 09	17	104
AB1810 17	8	66
AC 2010 21	3	116
AE 1010 02	2	1
AE 1010 06	8	5
AE 1010 15	10	5
AE 1010 19	4	6
AE 1010 22	10	21
AE 1010 24	1	1

Part Index

RE 2 STROKE
AUTORIKSHA

Part No.	Figure No.	Page No.
AE 1010 66	9	5
AE 1010 68	11	5
AE 1010 70	8	6
AE 1010 71	5	5
AE 1110 08	1	16
AE 1110 09	8	17
AE 1110 10	9	17
AE 1210 04	1	39
AE 1210 08	3	25
AE 1210 23	3	23
AE 1210 30	13	23
AE 1210 38	19	24
AE 1210 39	20	24
AE 1210 40	22	24
AE 1210 41	2	23
AE 1210 45	2	39
AE 1210 46	11	23
AE 1210 47	4	39
AE 1210 48	1	23
AE 1210 51	27	24
AE 1210 52	6	23
AE 1210 53	7	23
AE 1210 54	10	23
AE 1210 55	12	23
AE 1210 56	26	24
AE 1210 57	18	24
AE 1310 03	3	43
AE 1310 04	5	42
AE 1310 08	10	42
AE 1310 10	1	42
AE 1310 11	15	40
AE 1310 13	5	42
AE1010 14	1	5
AF 1210 01	12	146
AF 1210 04	1	146
AF 1210 12	6	140
AF 1210 12	16	131

Part No.	Figure No.	Page No.
AF 1210 18	4	146
AF 1210 23	2	146
AF 1210 24	3	146
AF 1210 25	5	146
AF 1210 26	6	146
AF 1210 27	7	146
AF 1210 28	8	146
AF 1210 29	10	146
AF 1210 30	11	146
AF 1210 32	13	146
AF 1210 34	14	146
AF 1210 36	16	147
AF 1210 38	18	147
AF 1210 39	31	147
AF 1210 40	32	147
AF 1210 41	24	145
AF 1210 41	30	147
AF 1210 44	10	136
AF 1210 44	19	147
AF 1210 45	20	147
AF 1210 46	22	147
AF 1210 49	3	142
AF 1210 49	6	148
AF 1210 49	28	150
AF 1210 50	4	142
AF 1210 50	27	150
AF 1210 51	20	143
AF 1210 52	21	143
AF 1210 53	22	143
AF 1210 57	4	148
AF 1210 57	5	142
AF 1210 57	18	150
AF 1210 58	4	149
AF 1210 58	5	148
AF 1210 59	23	143
AF 1210 60	7	142
AF 1210 61	9	142

Part Index

RE 2 STROKE
AUTORIKSHA

Part No.	Figure No.	Page No.
AF 1210 62	7	149
AF 1210 62	8	142
AF 1210 63	10	142
AF 1210 64	11	142
AF 1210 65	14	142
AF 1210 66	15	142
AF 1210 67	25	145
AF 1210 69	2	144
AF 1210 69	4	152
AF 1210 70	12	142
AF 1210 70	29	150
AF 1210 71	13	142
AF 1210 72	17	145
AF 1210 73	16	145
AF 1210 76	18	145
AF 1210 77	14	144
AF 1210 79	15	144
AF 1210 80	20	145
AF 1210 81	12	144
AF 1210 82	13	144
AF 1210 84	28	147
AF 1210 85	4	144
AF 1210 85	8	148
AF 1210 85	19	145
AF 1210 86	3	144
AF 1210 88	18	143
AF 1210 89	16	143
AF 1210 91	6	144
AF 1210 91	40	151
AF 1210 93	7	144
AF 1210 93	39	151
AF 1210 94	8	144
AF 1210 94	35	150
AF 1211 04	23	147
AF 1211 04	37	151
AF 1211 05	24	147
AF 1211 06	25	147

Part No.	Figure No.	Page No.
AF 1211 07	26	147
AF 1211 08	27	147
AF 1211 11	19	143
AF 1211 12	17	143
AF 1211 14	7	154
AF 1211 14	22	145
AF 1211 16	8	154
AF 1211 16	21	145
AF 1211 24	5	144
AF 1211 25	17	147
AF 1211 26	15	146
AF 1211 29	1	144
AF 1211 30	6	142
AF 1211 59	4	23
AF 1211 87	23	145
AF 1212 02	1	133
AF 1212 03	12	133
AF 1212 04	10	133
AF 1212 05	13	133
AF 1212 06	11	133
AF 1212 07	6	133
AF 1212 08	7	133
AF 1212 09	8	133
AF 1212 10	13	132
AF 1212 11	11	132
AF 1212 12	2	133
AF 1212 13	8	132
AF 1212 14	10	132
AF 1212 15	9	132
AF 1212 15	18	133
AF 1212 16	7	132
AF 1212 17	5	132
AF 1212 20	3	133
AF 1212 22	12	132
AF 1212 23	9	133
AF 1212 24	14	132
AF 1212 28	14	133

Part Index

RE 2 STROKE
AUTORIKSHA

Part No.	Figure No.	Page No.
AF 1212 30	2	127
AF 1212 30	2	134
AF 1212 31	3	127
AF 1212 31	3	134
AF 1212 31	23	135
AF 1212 32	1	129
AF 1212 33	2	129
AF 1212 33	2	137
AF 1212 34	3	129
AF 1212 34	3	137
AF 1212 35	4	129
AF 1212 35	4	137
AF 1212 36	5	129
AF 1212 36	5	137
AF 1212 37	6	129
AF 1212 37	6	137
AF 1212 38	7	129
AF 1212 39	8	129
AF 1212 39	8	137
AF 1212 40	9	129
AF 1212 40	9	137
AF 1212 41	10	129
AF 1212 41	10	137
AF 1212 42	12	129
AF 1212 42	13	137
AF 1212 42	20	128
AF 1212 42	20	135
AF 1212 43	11	129
AF 1212 43	11	137
AF 1212 43	12	134
AF 1212 44	13	127
AF 1212 44	13	134
AF 1212 45	12	127
AF 1212 46	17	128
AF 1212 46	17	135
AF 1212 48	16	128
AF 1212 48	16	135

Part No.	Figure No.	Page No.
AF 1212 49	6	127
AF 1212 49	15	127
AF 1212 49	15	134
AF 1212 50	7	127
AF 1212 50	7	134
AF 1212 51	9	127
AF 1212 51	9	134
AF 1212 52	11	127
AF 1212 52	11	134
AF 1212 53	8	127
AF 1212 53	8	134
AF 1212 54	5	127
AF 1212 54	5	134
AF 1212 59	10	127
AF 1212 59	10	134
AF 1212 62	14	127
AF 1212 62	14	134
AF 1212 64	13	129
AF 1212 64	14	137
AF 1212 64	19	128
AF 1212 64	19	135
AF 1212 65	1	130
AF 1212 67	2	130
AF 1212 67	11	136
AF 1212 68	3	130
AF 1212 68	12	136
AF 1212 82	14	129
AF 1212 82	15	137
AF 1213 16	4	141
AF 1213 17	5	141
AF 1213 19	6	141
AF 1213 20	7	141
AF 1213 22	8	141
AF 1213 23	9	141
AF 1213 25	10	141
AF 1213 26	11	141
AF 1213 27	12	141

Part Index

RE 2 STROKE
AUTORIKSHA

Part No.	Figure No.	Page No.
AF 1213 30	16	129
AF 1213 30	17	137
AF 1213 32	23	128
AF 1213 32	25	135
AF 1213 41	4	133
AF 1213 42	5	133
AF 1213 43	15	132
AF 1213 44	21	135
AF 1213 45	21	128
AF 1213 45	22	135
AF 1213 47	18	131
AF 1213 49	6	134
AF 1213 50	4	127
AF 1213 50	4	134
AF 1213 57	6	130
AF 1410 08	1	126
AF 1410 30	2	126
AF 1410 52	1	125
AF 1410 54	1	125
AF 1410 57	1	125
AF 1410 59	1	125
AF 1510 05	1	95
AF 1610 54	7	125
AF 1610 55	2	125
AF 1610 56	7	125
AF 1610 59	3	125
AF 1610 97	7	125
AF 1610 98	2	125
AF 2010 94	12	118
AF 2010 01	1	141
AF 2010 10	21	147
AF 2010 13	3	141
AF 2010 15	6	132
AF 2010 23	1	155
AF 2010 53	7	120
AF 2010 67	2	141
AF 2010 71	4	130

Part No.	Figure No.	Page No.
AF 2010 72	7	138
AF 2010 73	20	131
AF 2010 74	3	132
AF 2010 82	13	118
AF 2010 94	10	110
AF 2011 04	4	132
AF 2011 05	5	130
AF 2011 07	2	142
AF 2310 10	25	102
AF 2310 38	1	107
AF 2310 39	11	108
AF 2310 73	23	102
AG 1010 05	4	6
AG 1010 06	5	6
AG 1010 07	5	8
AG 1010 10	10	8
AG 1010 11	11	8
AG 1010 12	1	4
AG 1210 06	1	8
AG 1210 07	2	8
AG 1210 08	3	8
AG 1210 09	4	8
AG 1210 10	7	8
AG 1610 22	6	52
AL 1511 68	18	53
AL 1611 79	18	53
AL 1710 79	17	61
AL 1711 03	21	63
AL 2010 60	4	118
AL 2010 61	1	118
AL 2010 62	3	118
AL 2010 86	5	118
AL 2010 87	2	118
AL 2410 33	12	103
AM 1210 13	1	138
AM 1210 14	2	138
AM 1210 15	3	138

Part Index

RE 2 STROKE
AUTORIKSHA

Part No.	Figure No.	Page No.
AM 1210 16	4	138
AM 1210 17	5	138
AM 1210 18	11	138
AM 1210 19	12	138
AM 1210 21	13	138
AM 1210 22	14	138
AM 1210 30	1	137
AM 1210 31	7	137
AM 1210 36	12	137
AM 1210 43	1	136
AM 1210 48	9	130
AM 1210 49	5	136
AM 1210 51	6	136
AM 1210 51	12	130
AM 1210 53	8	136
AM 1410 04	3	47
AM 1910 01	8	97
AM 2010 20	19	139
AM 2010 21	10	138
AM 2010 29	9	138
AN 1210 27	16	29
AN 1210 30	26	29
AN 1210 31	29	29
AN 1210 33	21	29
AN 1210 34	18	29
AN 1210 71	20	29
AN 1210 72	32	30
AN 1210 73	31	30
AN 1210 74	27	29
AP 1011 57	9	11
AP 1011 58	12	11
AP 1011 59	11	11
AP 1011 60	14	11
AP 1011 62	13	11
AP 1011 64	17	11
AP 1012 43	2	4
AP 1012 44	2	4

Part No.	Figure No.	Page No.
AP 1012 45	2	4
AP 1210 09	2	38
AP 1210 10	3	38
AP 1210 27	16	38
AP 1210 47	4	38
AP 1210 57	10	38
AP 1210 64	14	38
AP 1211 24	8	38
AP 1211 25	6	38
AP 1211 26	7	38
AP 1211 32	5	38
AP 1410 08	4	47
AP 1410 08	6	47
AP 2010 12	7	118
AP 2010 21	6	120
AP 2310 21	29	102
BA 1220 03	14	45
BA 1220 05	11	45
BA 1220 05	20	48
BA 1321 10	9	55
BA 1321 22	2	42
BA 1321 34	4	40
BA 1321 71	1	55
BA 1321 72	4	55
BA 1321 73	5	55
BA 1510 04	1A	95
BA 1510 41	9	79
BA 1610 46	2	107
BA 1610 56	1	71
BA 1611 34	14	94
BA 1710 05	7	56
BA 1810 04	1	64
BA 1810 06	1	83
BA 1910 29	2	90
BA 1910 46	9	86
BA 2010 29	2A	116
BA 2010 33	11	110

Part Index

RE 2 STROKE
AUTORIKSHA

Part No.	Figure No.	Page No.
BA 2010 47	1A	115
BA 2010 48	1A	116
BA 2310 13	10	35
BA 2310 38	15	105
BA 2310 58	2	101
BB 1210 35	27	102
CB 1210 46	18	32
CD 1010 24	3	3
CD 1010 76	18	2
CD 1010 79	7	3
CD 1010 80	9	12
CD 1110 04	11	17
CD 1110 05	3	16
CD 1110 05	5	21
CD 1110 06	7	16
CD1010 08	1	3
CD1011 02	17	2
CM 1910 49	5	88
CR 1010 62	4	21
CR 1210 23	22	29
CR 1210 24	23	29
CR 1210 25	8	28
CR 1210 25	17	29
CR 1210 26	7	28
CR 1210 28	2	28
CR 1210 29	1	28
CR 1210 30	6	28
CR 1210 31	5	28
CR 1210 32	16	24
CR 1210 36	9	28
CR 1210 38	30	29
CR 1210 40	24	29
CR 1210 42	28	29
CR 1210 47	10	28
CR 1210 49	11	28
CR 1210 50	12	28
CR 1210 51	4	28

Part No.	Figure No.	Page No.
CR 1210 52	3	28
CR 1210 80	27	32
CS 1410 06	6	45
CX 1410 44	12	148
CX 1410 45	13	148
CX 1410 46	9	148
DD 1210 47	8	31
DD 1210 52	16	32
DD 1210 89	22	32
DD 1412 27	4	19
DD 1412 27	16	20
DD 1610 13	9	95
DJ 2210 14	1	124
GH 1210 21	13	31
LH C000 01	13	88
XX XXXX XX	13	22